



FEDERAL MINISTRY OF EDUCATION

***Statistics
of
Federal Unity Colleges in
Nigeria
2020/2021 Academic Session***



STATISTICS & NEMIS FME ABUJA

MARCH 2021

TABLE OF CONTENTS

1.1 Tables 1, 2 and Figure 1 present Number of Federal Unity Colleges by Geo-Political Zone and State.....	1
2. 0 STUDENTS ENROLMENT.....	4
2.1: Tables 3 to 7 Show the Enrolment in Junior and Senior Secondary School by Geo-Political Zone, State, Level, Class and Gender.....	4
3. 0 TEACHING AND NON-TEACHING STAFF:	13
3.1: Tables 8 to 12 Show Number of Teaching and Non-Teaching Staff by Geo-Political Zone and Qualifications	13
4.0 FACILITIES:	26
4.1 Tables 14 to 16 Show Number of Classrooms, Toilets and Other Facilities.....	26
5.0 KEY INDICATORS	33
5.1 Table 17 presents the following key indicators:	33

LIST OF TABLES

Table 1: Number of Federal Unity Colleges by Geo-Political Zone.....	1
Table 2: Federal Unity Colleges by State	2
Table 3: Summary of Enrolment in Junior and Senior Secondary by Gender: 2020/2021.....	4
Table 4: Enrolment in Junior and Senior Secondary Schools by Geo-Political Zone, Level and Gender	5
Table 5: Enrolment in Junior and Senior Secondary Schools by Geo-Political Zone, Class and Gender:	5
Table 6: Enrolment in Junior and Senior Secondary Schools by State, Class and Gender: 2020/2021.....	6
Table 7: Enrolment by School, Class, Gender and Population:	9
Table 8: Number of Teachers by Geo-Political Zone, Level and Gender	13
Table 9: Number of Teaching and Non-Teaching Staff by State, School and Gender	14
Table 10: Number of Teachers by Qualifications in Junior Secondary Schools.....	16
Table 11: Number of Teachers by Qualifications in Senior Secondary Schools	19
Table 12: Number of Teachers and Qualified Teachers by State, School, Level and Gender	22
Table 13: Summary of Qualified Teachers by Zone, Level and Gender:.....	25
Table 14: Number and Condition of Classrooms by State and School:	26
Table 15: Number and Condition of Toilets in Students' Hostel, Classroom and Staff Room by State, School and Gender:...	28
Table 16: Number and Condition of Other Facilities by State and School	31
Table 17: Federal Unity Colleges Key indicators:.....	33

LIST OF FIGURES

Figure 1: Number of Federal Unity Colleges by Geo-Political Zone.....	1
Figure 2: Summary of Enrolment in Junior and Senior Secondary by Gender: 2020/2021	4
Figure 3: Enrolment by Geo-Political Zone.....	5
Figure 4: Number of Teachers by Geo-Political Zone, Level and Gender.....	13
Figure 5: Summary of Qualified Teachers by Zone, Level and Gender.....	25

1.0 NUMBER OF COLLEGES BY GEO-POLITICAL ZONE

1.1 Tables 1, 2 and Figure 1 present Number of Federal Unity Colleges by Geo-Political Zone and State

Table 1: Number of Federal Unity Colleges by Geo-Political Zone

ZONE	FGC	FSTC	FGGC	FGA	FGBC	FSC	KINGS	QUEENS'	NO. OF SCHOOL
North Central	10	5	8	1	1	0	0	0	25
North East	7	3	6	0	0	0	0	0	16
North West	7	5	7	0	0	1	0	0	20
South East	5	4	4	0	0	0	0	0	13
South South	6	4	6	0	0	1	0	0	17
South West	6	6	5	0	0	0	1	1	19
Total	41	27	36	1	1	2	1	1	110

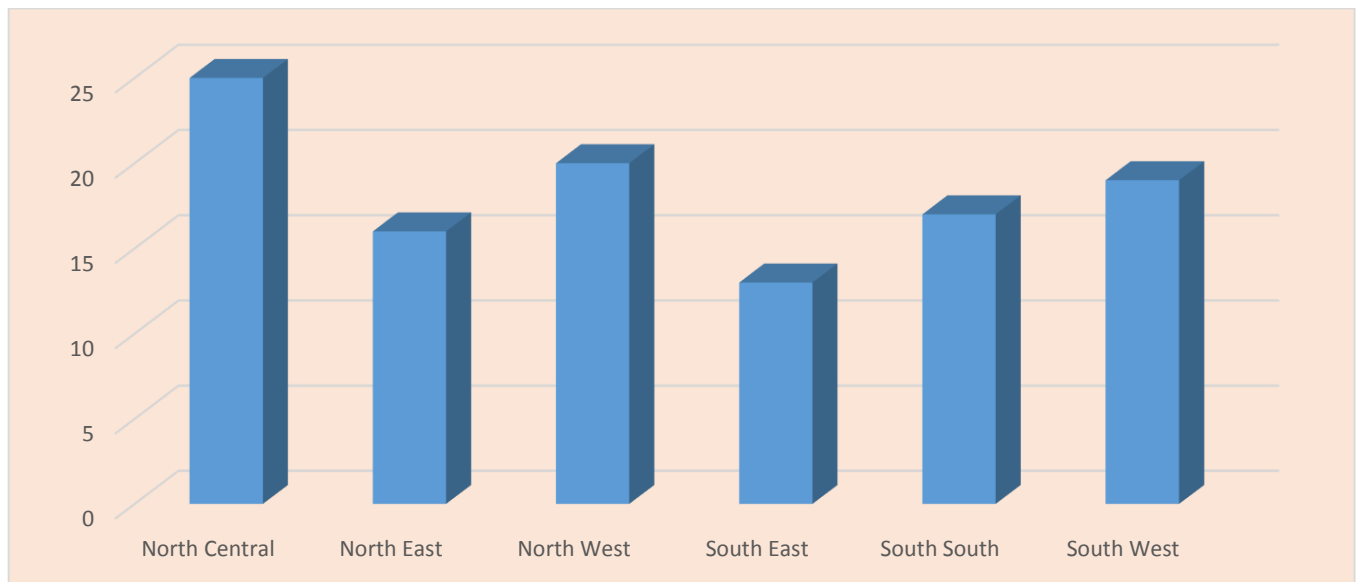


Figure 1: Number of Federal Unity Colleges by Geo-Political Zone

Table 2: Federal Unity Colleges by State

STATE	NAME OF SCHOOL
ABIA	FGC, OHAFIA
	FSTC, OHANSO
	FGGC UMUAHIA
ADAMAWA	FGC, GANYE
	FGGC, YOLA
	FSTC MICHIKA
AKWA IBOM	FGGC IKOT OBIO ITONG
	FGC IKOT EKPENE
	FSTC,UYO
ANAMBRA	FGGC, ONITSHA
	FGC, NISE
	FSTC, AWKA
BAUCHI	FGC,AZARE
	FGGC, BAUCHI
BAYELSA	FGC, ODI
	FSTC TUNGBO
	FGGC, IMIRINGI
BENUE	FGGC GBOKO
	FSTC, OTUKPO, BENUE STATE
	FGC OTOBI
	FGC, VANDEIKYA
BORNO	FGC, MAIDUGURI
	FSTC LASSA
	FGGC MONGUNO
CROSS RIVER	FGGC, CALABAR
	FGC, IKOM.
	FSC, OGOJA
DELTA	FGGC, IBUSA,
	FGC WARRI
EBONYI	FGC, OKPOSI
	FGGC, EZZAMGBO
	FSTC AMUZU
EDO	FGGC BENIN
	FGC, IBILLO
	FSTC, UROMI
EKITI	FGC IKOLE EKITI
	FSTC,USI-EKITI
	FGGC EFON ALAAYE,
ENUGU	FGC ENUGU
	FGGC, LEJJA
FCT	FGBC, GARKI
	FGC KWALI
	FGC RUBOCHI
	FGGC BWARI
	FGGC, ABAJI
	FSTC OROZO
GOMBE	FGC, BILLIRI.
	FGGC,BAJOGA
IMO	FGC, OKIGWE
	FSTC,UMUAKA
JIGAWA	FGC KIYAWA
	FSTC, HADEJIA
	FGGC KAZAURE
KADUNA	FGGC ZARIA
	FSTC, KAFANCHAN

	FGC KADUNA
KANO	FSTC GANDUJE,
	FGC, KANO
	FGGC MIJIBIR
KATSINA	FGC, DAURA
	FSTC DAYI
	FGGC, BAKORI
KEBBI	FSTC ZURU
	FGC, BIRNIN YAURI
	FGGC, GWANDU
KOGI	FGC, UGWOLAWO
	FSTC, UGUGU
	FGGC KABBA
KWARA	FGC, ILORIN
	FGGC OMU-ARAN
LAGOS	FGC IJANIKIN
	FSTC YABA
	KING'S COLLEGE LAGOS
	QUEEN'S COLLEGE, LAGOS
NASARAWA	FGGC KEANA
	FSTC DOMA
	FGC KEFFI
NIGER	FSTC KUTA SHIRORO
	FGA SULEJA
	FGC, NEW BUSSA
	FGGC, BIDA
	FGC MINNA
OGUN	FGGC, SAGAMU
	FGC, ODOGBOLU
	FSTC IJEBUN MUSIN
ONDO	FGC, IDOANI
	FSTC IKARE AKOKO
	FGGC, AKURE
OSUN	FGGC, IPETUMODU.
	FSTC, ILESA
	FGC IKIRUN
OYO	FSTC IGANGAN,
	FGGC, OYO
	FGC, OGBOMOSO
PLATEAU	FGGC, LANGTANG
	FGC, JOS
RIVERS	FGC, PORT HARCOURT
	FGGC ABULOMA
	FSTC, AHOADA
SOKOTO	FGC, SOKOTO
	FGGC TAMBOWAL,
	FSC SOKOTO
TARABA	FGC
	FGC, WUKARI
	FGGC, JALINGO
	FSTC, JALINGO
YOBE	FGC BUNI YADI
	FGGC POTISKUM
ZAMFARA	FGGC GUSAU
	FGC ANKA

2. 0 STUDENTS ENROLMENT

2.1: Tables 3 to 7 Show the Enrolment in Junior and Senior Secondary School by Geo-Political Zone, State, Level, Class and Gender.

Table 3: Summary of Enrolment in Junior and Senior Secondary by Gender: 2020/2021

JSS			SS			Total		
M	F	T	M	F	T	M	F	T
32647	46803	79450	36282	49407	85689	68929	96210	165139

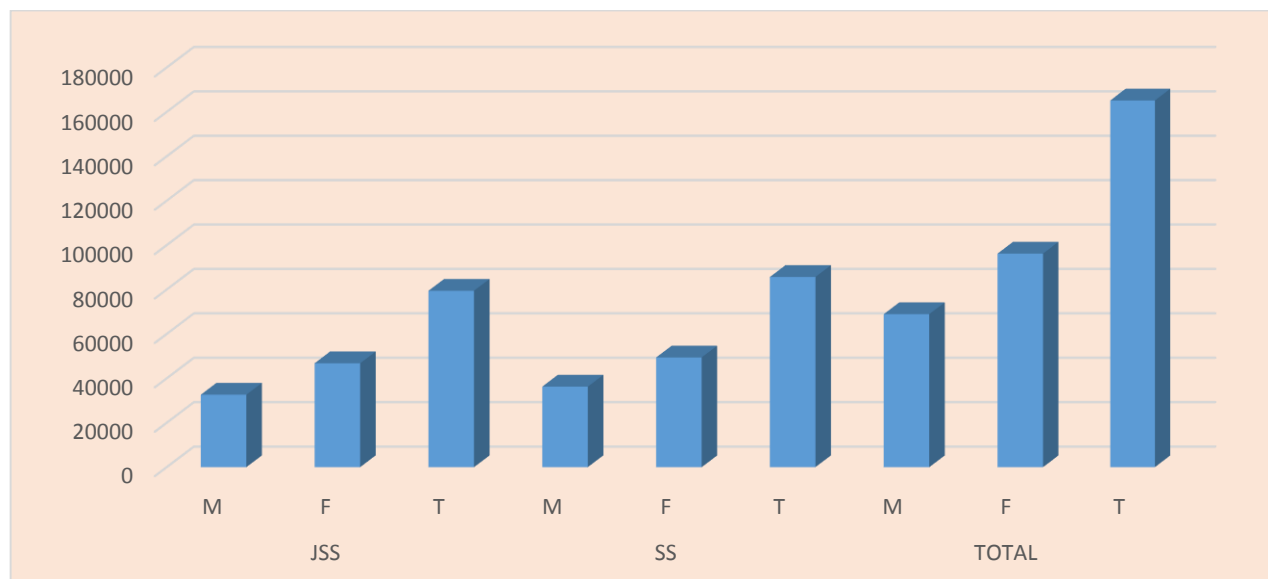


Figure 2: Summary of Enrolment in Junior and Senior Secondary by Gender: 2020/2021

Table 4: Enrolment in Junior and Senior Secondary Schools by Geo-Political Zone, Level and Gender

ZONE	NUMBER OF SCHOOL	JUNIOR SEC. SCHOOLS			SENIOR SEC. SCHOOLS			T		
		M	F	T	M	F	T	M	F	T
NC	25	8542	8781	17323	9097	10024	19121	17639	18805	36444
NE	15	3068	4664	7732	3471	4573	8044	6539	9237	15776
NW	20	4937	6837	11774	5638	8013	13651	10575	14850	25425
SE	14	3891	7684	11575	4296	7353	11649	8187	15037	23224
SS	17	4423	8794	13217	4880	8219	13099	9303	17013	26316
SW	19	7786	10043	17829	8900	11225	20125	16686	21268	37954
Total	110	32647	46803	79450	36282	49407	85689	68929	96210	165139

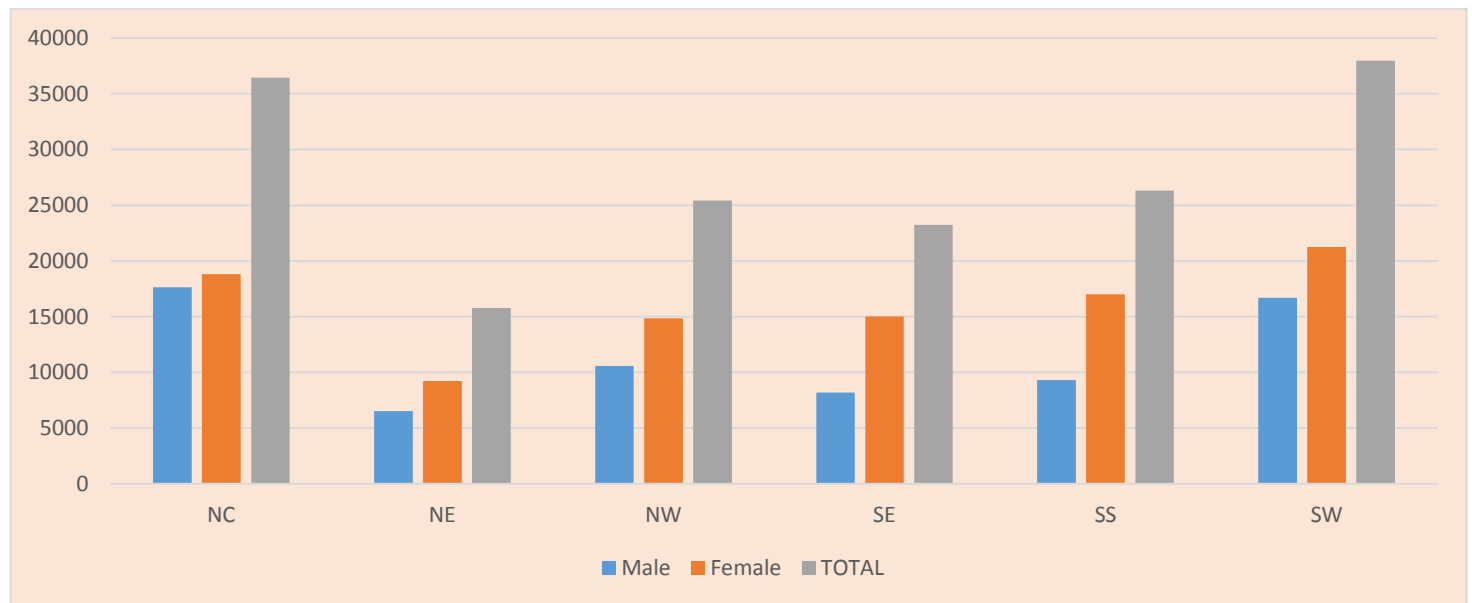


Figure 3: Enrolment by Geo-Political Zone

Table 5: Enrolment in Junior and Senior Secondary Schools by Geo-Political Zone, Class and Gender:

ZONE	NUMBER OF SCHOOL	JSS 1		JSS 2		JSS 3		SS 1		SS 2		SS 3		TOTAL		
		M	F	M	F	M	F	M	F	M	F	M	F	M	F	T
NC	25	2695	2836	3219	3210	2628	2735	3337	3522	3034	3595	2726	2907	1763	1880	36444
NE	15	1083	1768	1062	1575	923	1321	1287	1780	1151	1443	1033	1350	6539	9237	15776
NW	20	1588	2355	1664	2402	1685	2080	2155	2731	1948	2805	1535	2477	1057	1485	25425
SE	14	1183	2462	1360	2648	1348	2574	1559	2518	1290	2257	1447	2578	8187	1503	23224
SS	17	1551	2998	1494	2986	1378	2810	1732	2761	1681	2633	1467	2825	9303	1701	26316
SW	19	2427	2998	2663	3425	2696	3620	3282	4006	2854	3660	2764	3559	1668	2126	37954
Total	110	10527	1541	1146	16246	1065	15140	1335	17318	1195	16393	1097	15696	6892	9621	16513

Table 6: Enrolment in Junior and Senior Secondary Schools by State, Class and Gender: 2020/2021

STATE	NAME OF SCHOOL	JSS 1		JSS 2		JSS 3		SS 1		SS 2		SS 3		TOTAL		
		M	F	M	F	M	F	M	F	M	F	M	F	M	F	T
ABIA	FGC, OHAFIA	169	109	178	114	137	85	166	101	131	93	161	94	942	596	1,538
	FGGC UMUAHIA	0	430	0	431	0	378	0	433	0	364	0	401	0	2,437	2,437
	FSTC, OHANSO	188	79	190	50	150	91	238	49	159	56	110	81	1,035	406	1,441
ADAMAWA	FGC, GANYE	138	92	140	95	167	69	165	84	177	65	162	76	949	481	1,430
	FSTC MICHIKA	63	38	53	36	47	35	68	40	76	35	63	51	370	235	605
	FGGC, YOLA	0	240	0	280	0	210	0	245	0	230	0	200	0	1,405	1,405
AKWA IBOM	FSTC,UYO	0	230	0	262	0	239	0	223	0	163	0	140	0	1,257	1,257
	FGC IKOT EKPENE	339	133	329	142	297	186	231	150	249	130	218	141	1,663	882	2,545
	FGGC IKOT OBIO ITONG	0	293	0	322	0	290	0	302	0	279	0	285	0	1,771	1,771
ANAMBRA	FSTC, AWKA	270	182	277	132	368	143	386	130	384	136	375	127	2,060	850	2,910
	FGGC, ONITSHA	0	390	0	431	0	469	0	449	0	322	0	388	0	2,449	2,449
	FGC, NISE,	100	60	250	136	254	141	245	120	213	125	250	167	1,312	749	2,061
BAUCHI	FGC,AZARE	163	57	129	49	71	23	194	31	139	32	119	29	815	221	1,036
	FGGC, BAUCHI	0	99	0	73	0	77	0	157	0	171	0	122	0	699	699
BAYELSA	FGGC, IMIRINGI	0	109	0	117	0	89	0	106	0	68	0	90	0	579	579
	FGCE, ODI	126	102	106	94	99	63	200	85	167	48	85	78	783	470	1,253
	FSTC TUNGBO	108	80	80	41	74	30	82	42	72	42	59	45	475	280	755
BENUE	FGC, VANDEIKYA	239	109	242	101	247	98	201	95	202	93	198	98	1,329	594	1,923
	FSTC, OTUKPO,	143	47	182	45	105	49	166	60	117	154	115	42	828	397	1,225
	FGC OTOBI	116	124	129	110	121	90	140	110	106	124	119	71	731	629	1,360
	FGGC GBOKO	258	0	226	0	198	0	178	0	173	0	226	0	1,259	0	1,259
BORNO	FGC, MAIDUGURI	210	150	150	120	220	219	270	200	298	156	270	140	1,418	985	2,403
	FGGC MONGUNO	0	398	0	223	0	131	0	319	0	110	0	123	0	1,304	1,304
	FSTC LASSA	71	41	76	52	58	35	55	27	25	18	33	19	318	192	510
CROSS RIVER	FGGC, CALABAR	0	345	0	296	0	324	0	303	0	279	0	332	0	1,879	1,879
	FGC, IKOM.	125	93	141	105	112	85	92	71	118	81	118	91	706	526	1,232
	FSC, OGOJA	0	0	0	0	0	0	286	157	266	147	224	142	776	446	1,222
DELTA	FGC WARRI	183	160	179	175	255	241	220	207	238	193	217	238	1,292	1,214	2,506
	FGGC, IBUSA,	0	313	0	292	0	232	0	220	0	228	0	260	0	1,545	1,545
EBONYI	FSTC AMUZU	0	50	0	0	0	0	0	0	0	0	0	0	0	50	50
	FGC, OKPOSI	197	124	203	124	211	108	192	119	175	91	189	101	1,167	667	1,834
	FGGC, EZZAMGBO	0	170	0	276	0	235	0	230	0	215	0	199	0	1,325	1,325
EDO	FGC, IBILLO	85	62	79	59	89	66	78	65	72	64	66	56	469	372	841
	FSTC, UROMI	183	86	178	68	123	34	178	54	156	72	143	49	961	363	1,324
	FGGC BENIN	0	390	0	388	0	331	0	275	0	308	0	375	0	2,067	2,067

EKITI	FGC IKOLE EKITI	180	97	119	92	93	76	150	97	88	79	110	82	740	523	1,263
	FSTC,USI-EKITI	139	60	150	66	114	80	186	83	135	88	131	85	855	462	1,317
	FGGC EFON ALAAYE,	0	136	0	148	0	137	0	126	0	140	0	110	0	797	797
ENUGU	FGGC, LEJJA	0	350	0	410	0	362	0	295	0	308	0	384	0	2,109	2,109
	FGC ENUGU	0	0	0	0	0	0	0	0	0	0	0	0	0	0	0
FCT	FGGC, ABAJI	0	226	0	295	0	199	0	298	0	287	0	240	0	1,545	1,545
	FSTC OROZO	232	112	195	116	254	123	434	224	363	167	350	132	1,828	874	2,702
	FGGC BWARI	0	263	0	329	0	322	0	338	0	442	0	389	0	2,083	2,083
	FGC KWALI	300	271	320	260	306	206	440	302	380	200	306	206	2,052	1,445	3,497
	FGC RUBOCHI	187	104	208	121	214	110	214	103	210	114	241	59	1,274	611	1,885
	FGBC, GARKI	246	0	290	0	222	0	374	0	219	0	225	0	1,576	0	1,576
GOMBE	FGC, BILLIRI.	179	108	199	119	139	76	196	115	174	125	180	95	1,067	638	1,705
	FGGC,BAJOGA	0	34	0	25	0	24	0	40	0	41	0	31	0	195	195
IMO	FGC, OKIGWE	259	118	262	102	228	120	332	162	228	135	362	165	1,671	802	2,473
	FSTC,UMUAKA	0	0	0	0	0	0	0	0	0	0	0	0	0	0	0
	FGGC, OWERRI	0	400	0	442	0	442	0	430	0	412	0	471	0	2,597	2,597
JIGAWA	FGGC KAZAURE	0	140	0	120	0	60	0	148	0	150	0	138	0	756	756
	FSTC,HADEJIA	0	0	0	0	0	0	0	0	0	0	0	0	0	0	0
	FGC KIYAWA	185	130	184	118	187	120	207	154	164	122	191	161	1,118	805	1,923
KADUNA	FGGC ZARIA	0	235	0	201	0	147	0	260	0	236	0	179	0	1,258	1,258
	FSTC, KAFANCHAN	129	73	143	71	157	66	163	120	172	115	197	153	961	598	1,559
	FGC KADUNA	190	180	204	132	174	162	256	249	223	242	160	179	1,207	1,144	2,351
KANO	FSTC GANDUJE,	0	0	0	0	0	0	0	0	0	0	0	0	0	0	0
	FGGC MINJIBIR	0	180	0	188	0	110	0	198	0	195	0	162	0	1,033	1,033
	FGC, KANO	202	165	222	120	153	92	257	103	231	133	133	125	1,198	738	1,936
KATSINA	FGGC,BAKORI	0	280	0	481	0	366	0	418	0	499	0	491	0	2,535	2,535
	FSTC DAYI	53	17	54	11	63	21	93	22	132	36	113	24	508	131	639
	FGC, DAURA	190	66	200	56	196	60	200	56	186	70	189	67	1,161	375	1,536
KEBBI	FGGC,GWANDU	0	247	0	264	0	242	0	224	0	259	0	216	0	1,452	1,452
	FGC, BIRNIN YAURI	43	21	54	34	74	36	74	34	79	32	63	23	387	180	567
	FSTC ZURU	142	86	166	40	158	84	85	79	87	83	84	75	722	447	1,169
KOGI	FGGC KABBA	0	220	0	228	0	250	0	244	0	264	0	199	0	1,405	1,405
	FGC,UGWOLAWO	98	50	235	170	69	50	214	165	233	159	62	64	911	658	1,569
	FSTC UGUGU	0	0	0	0	0	0	0	0	0	0	0	0	0	0	0
KWARA	FGC, ILORIN	164	117	189	122	160	120	166	143	171	117	172	125	1,022	744	1,766
	FGGC OMU-ARAN	0	194	0	198	0	183	0	197	0	168	0	154	0	1,094	1,094
LAGOS	FGC IJANIKIN	262	218	235	249	302	285	310	275	242	241	267	244	1,618	1,512	3,130
	KING'S COLLEGE LAGOS	398	0	445	0	575	0	580	0	537	0	555	0	3,090	0	3,090
	FSTC YABA	299	106	470	408	492	404	805	652	736	608	565	520	3,367	2,698	6,065

	QUEEN'S COLLEGE, LAGOS	0	450	0	408	0	681	0	620	0	527	0	719	0	3,405	3,405
NASARAWA	FGC KEFFI	120	114	138	122	123	109	140	134	148	191	178	162	847	832	1,679
	FSTC DOMA	76	29	90	40	63	37	120	90	131	99	84	56	564	351	915
	FGGC KEANA	0	133	0	140	0	38	0	153	0	105	0	52	0	621	621
NIGER STATE	FGC MINNA	257	76	199	106	189	148	196	158	244	142	220	168	1,305	798	2,103
	FGC,NEW BUSSA	39	62	46	35	0	39	0	50	0	62	0	97	85	345	430
	FGGC,BIDA	0	170	0	130	0	106	0	165	0	158	0	152	0	881	881
	FSTC KUTA SHIRORO	0	0	0	0	0	0	0	0	0	0	0	0	0	0	0
OGUN	FGA SULEJA,	69	60	194	173	206	153	172	125	172	153	76	67	889	731	1,620
	FGC, ODOGBOLU	273	145	251	131	274	188	202	154	173	154	244	142	1,417	914	2,331
	FSTC IJEBUN MUSIN	0	0	0	0	0	0	0	0	0	0	0	0	0	0	0
ONDO	FGGC,SAGAMU	0	347	0	386	0	398	0	416	0	317	0	349	0	2,213	2,213
	FGC, IDOANI	188	85	179	117	122	74	122	79	125	89	156	112	892	556	1,448
	FGGC, AKURE	0	322	0	327	0	300	0	305	0	314	0	295	0	1,863	1,863
OSUN	FSTC IKARE AKOKO	137	77	263	157	258	160	302	196	266	170	250	149	1,476	909	2,385
	FGGC, IPETUMODU.	0	354	0	352	0	275	0	362	0	353	0	228	0	1,924	1,924
	FSTC, ILESA	134	66	150	63	136	62	209	84	178	65	141	49	948	389	1,337
OYO	FGC IKIRUN	244	127	224	135	167	119	242	142	183	114	162	102	1,222	739	1,961
	FGC, OGBOMOSO	173	109	177	94	163	101	174	105	191	101	183	104	1,061	614	1,675
	FSTC IGANGAN,	0	0	0	0	0	0	0	0	0	0	0	0	0	0	0
PLATEAU	FGGC, OYO	0	299	0	292	0	280	0	310	0	300	0	269	0	1,750	1,750
	FGGC, LANGTANG	0	194	0	202	0	170	0	211	0	205	0	232	0	1,214	1,214
RIVERS	FGC, JOS	151	161	336	167	151	135	182	157	165	191	154	142	1,139	953	2,092
	FSTC, AHOADA	146	68	137	69	156	83	128	65	145	60	159	76	871	421	1,292
	FGGC ABULOMA	0	340	0	376	0	388	0	319	0	295	0	307	0	2,025	2,025
SOKOTO	FGC, PORT HARCOURT	256	194	265	180	173	129	237	117	198	176	178	120	1,307	916	2,223
	FGC, SOKOTO	192	131	173	119	139	92	243	151	195	157	152	98	1,094	748	1,842
	FGGC TAMBUNWAL,	0	284	0	302	0	267	0	270	0	269	0	215	0	1,607	1,607
TARABA	FSC SOKOTO	0	0	0	0	0	0	235	85	332	83	139	44	706	212	918
	FSTC, JALINGO	40	29	86	10	54	9	118	12	160	16	103	14	561	90	651
	FGGC, JALINGO	0	106	0	127	0	83	0	125	0	118	0	104	0	663	663
YOBE	FGC, WUKARI	128	125	102	112	87	83	121	142	102	111	103	106	643	679	1,322
	FGGC POTISKUM	0	239	0	241	0	240	0	220	0	215	0	240	0	1,395	1,395
ZAMFARA	FGC BUNI YADI	91	12	127	13	80	7	100	23	0	0	0	0	398	55	453
	FGC ANKA	262	62	264	62	384	79	342	78	147	37	114	32	1,513	350	1,863
	FGGC GUSAU	0	58	0	83	0	76	0	82	0	87	0	95	0	481	481
Total		10,527	15,417	11,462	16,246	10,658	15,140	13,352	17,318	11,958	16,393	10,972	15,696	68,929	96,210	165,139

Table 7: Enrolment by School, Class, Gender and Population:

NAME OF SCHOOL	JSS 1		JSS 2		JSS 3		SS 1		SS 2		SS 3		TOTAL		
	M	F	M	F	M	F	M	F	M	F	M	F	M	F	T
FSTC YABA	299	106	470	408	492	404	805	652	736	608	565	520	3,367	2,698	6,065
FGC KWALI	300	271	320	260	306	206	440	302	380	200	306	206	2,052	1,445	3,497
QUEEN'S COLLEGE, LAGOS	0	450	0	408	0	681	0	620	0	527	0	719	0	3,405	3,405
FGC IJANIKIN	262	218	235	249	302	285	310	275	242	241	267	244	1,618	1,512	3,130
KING'S COLLEGE LAGOS	398	0	445	0	575	0	580	0	537	0	555	0	3,090	0	3,090
FSTC, AWKA	270	182	277	132	368	143	386	130	384	136	375	127	2,060	850	2,910
FSTC OROZO	232	112	195	116	254	123	434	224	363	167	350	132	1,828	874	2,702
FGGC, OWERRI	0	400	0	442	0	442	0	430	0	412	0	471	0	2,597	2,597
FGC IKOT EKPENE	339	133	329	142	297	186	231	150	249	130	218	141	1,663	882	2,545
FGGC, BAKORI	0	280	0	481	0	366	0	418	0	499	0	491	0	2,535	2,535
FGC WARRI	183	160	179	175	255	241	220	207	238	193	217	238	1,292	1,214	2,506
FGC, OKIGWE	259	118	262	102	228	120	332	162	228	135	362	165	1,671	802	2,473
FGGC, ONITSHA	0	390	0	431	0	469	0	449	0	322	0	388	0	2,449	2,449
FGGC UMUAHIA	0	430	0	431	0	378	0	433	0	364	0	401	0	2,437	2,437
FGC, MAIDUGURI	210	150	150	120	220	219	270	200	298	156	270	140	1,418	985	2,403
FSTC IKARE AKOKO	137	77	263	157	258	160	302	196	266	170	250	149	1,476	909	2,385
FGC KADUNA	190	180	204	132	174	162	256	249	223	242	160	179	1,207	1,144	2,351
FGC, ODOGBOLU	273	145	251	131	274	188	202	154	173	154	244	142	1,417	914	2,331
FGC, PORT HARCOURT	256	194	265	180	173	129	237	117	198	176	178	120	1,307	916	2,223
FGGC, SAGAMU	0	347	0	386	0	398	0	416	0	317	0	349	0	2,213	2,213
FGGC, LEJJA	0	350	0	410	0	362	0	295	0	308	0	384	0	2,109	2,109
FGC MINNA	257	76	199	106	189	148	196	158	244	142	220	168	1,305	798	2,103
FGC, JOS	151	161	336	167	151	135	182	157	165	191	154	142	1,139	953	2,092
FGGC BWARI	0	263	0	329	0	322	0	338	0	442	0	389	0	2,083	2,083
FGGC BENIN	0	390	0	388	0	331	0	275	0	308	0	375	0	2,067	2,067
FGC, NISE,	100	60	250	136	254	141	245	120	213	125	250	167	1,312	749	2,061
FGGC ABULOMA	0	340	0	376	0	388	0	319	0	295	0	307	0	2,025	2,025
FGC IKIRUN	244	127	224	135	167	119	242	142	183	114	162	102	1,222	739	1,961
FGC, KANO	202	165	222	120	153	92	257	103	231	133	133	125	1,198	738	1,936
FGGC, IPETUMODU.	0	354	0	352	0	275	0	362	0	353	0	228	0	1,924	1,924
FGC, VANDEIKYA	239	109	242	101	247	98	201	95	202	93	198	98	1,329	594	1,923
FGC KIYAWA	185	130	184	118	187	120	207	154	164	122	191	161	1,118	805	1,923
FGC RUBOCHI	187	104	208	121	214	110	214	103	210	114	241	59	1,274	611	1,885
FGGC, CALABAR	0	345	0	296	0	324	0	303	0	279	0	332	0	1,879	1,879

FGGC, AKURE	0	322	0	327	0	300	0	305	0	314	0	295	0	1,863	1,863
FGC ANKA	262	62	264	62	384	79	342	78	147	37	114	32	1,513	350	1,863
FGC, SOKOTO	192	131	173	119	139	92	243	151	195	157	152	98	1,094	748	1,842
FGC, OKPOSI	197	124	203	124	211	108	192	119	175	91	189	101	1,167	667	1,834
FGGC IKOT OBIO ITONG	0	293	0	322	0	290	0	302	0	279	0	285	0	1,771	1,771
FGC, ILORIN	164	117	189	122	160	120	166	143	171	117	172	125	1,022	744	1,766
FGGC, OYO	0	299	0	292	0	280	0	310	0	300	0	269	0	1,750	1,750
FGC, BILLIRI.	179	108	199	119	139	76	196	115	174	125	180	95	1,067	638	1,705
FGC KEFFI	120	114	138	122	123	109	140	134	148	191	178	162	847	832	1,679
FGC, OGBOMOSO	173	109	177	94	163	101	174	105	191	101	183	104	1,061	614	1,675
FGA SULEJA,	69	60	194	173	206	153	172	125	172	153	76	67	889	731	1,620
FGGC TAMBUIWAL,	0	284	0	302	0	267	0	270	0	269	0	215	0	1,607	1,607
FGBC, GARKI	246	0	290	0	222	0	374	0	219	0	225	0	1,576	0	1,576
FGC, UGWOLAWO	98	50	235	170	69	50	214	165	233	159	62	64	911	658	1,569
FSTC, KAFANCHAN	129	73	143	71	157	66	163	120	172	115	197	153	961	598	1,559
FGGC, IBUSA,	0	313	0	292	0	232	0	220	0	228	0	260	0	1,545	1,545
FGGC, ABAJI	0	226	0	295	0	199	0	298	0	287	0	240	0	1,545	1,545
FGC, OHAFIA	169	109	178	114	137	85	166	101	131	93	161	94	942	596	1,538
FGC, DAURA	190	66	200	56	196	60	200	56	186	70	189	67	1,161	375	1,536
FGGC, GWANDU	0	247	0	264	0	242	0	224	0	259	0	216	0	1,452	1,452
FGC, IDOANI	188	85	179	117	122	74	122	79	125	89	156	112	892	556	1,448
FSTC, OHANSO	188	79	190	50	150	91	238	49	159	56	110	81	1,035	406	1,441
FGC, GANYE	138	92	140	95	167	69	165	84	177	65	162	76	949	481	1,430
FGGC, YOLA	0	240	0	280	0	210	0	245	0	230	0	200	0	1,405	1,405
FGGC KABBA	0	220	0	228	0	250	0	244	0	264	0	199	0	1,405	1,405
FGGC POTISKUM	0	239	0	241	0	240	0	220	0	215	0	240	0	1,395	1,395
FGC OTOBI	116	124	129	110	121	90	140	110	106	124	119	71	731	629	1,360
FSTC, ILESA	134	66	150	63	136	62	209	84	178	65	141	49	948	389	1,337
FGGC, EZZAMGBO	0	170	0	276	0	235	0	230	0	215	0	199	0	1,325	1,325
FSTC, UROMI	183	86	178	68	123	34	178	54	156	72	143	49	961	363	1,324

FGC, WUKARI	128	125	102	112	87	83	121	142	102	111	103	106	643	679	1,322
FSTC,USI-EKITI	139	60	150	66	114	80	186	83	135	88	131	85	855	462	1,317
FGGC MONGUNO	0	398	0	223	0	131	0	319	0	110	0	123	0	1,304	1,304
FSTC, AHOADA	146	68	137	69	156	83	128	65	145	60	159	76	871	421	1,292
FGC IKOLE EKITI	180	97	119	92	93	76	150	97	88	79	110	82	740	523	1,263
FGGC GBOKO	258	0	226	0	198	0	178	0	173	0	226	0	1,259	0	1,259
FGGC ZARIA	0	235	0	201	0	147	0	260	0	236	0	179	0	1,258	1,258
FSTC,UYO	0	230	0	262	0	239	0	223	0	163	0	140	0	1,257	1,257
FGCE, ODI	126	102	106	94	99	63	200	85	167	48	85	78	783	470	1,253
FGC, IKOM.	125	93	141	105	112	85	92	71	118	81	118	91	706	526	1,232
FSTC, OTUKPO,	143	47	182	45	105	49	166	60	117	154	115	42	828	397	1,225
FSC, OGOJA	0	0	0	0	0	0	286	157	266	147	224	142	776	446	1,222
FGGC, LANGTANG	0	194	0	202	0	170	0	211	0	205	0	232	0	1,214	1,214
FSTC ZURU	142	86	166	40	158	84	85	79	87	83	84	75	722	447	1,169
FGGC OMU-ARAN	0	194	0	198	0	183	0	197	0	168	0	154	0	1,094	1,094
FGC,AZARE	163	57	129	49	71	23	194	31	139	32	119	29	815	221	1,036
FGGC MINJIBIR	0	180	0	188	0	110	0	198	0	195	0	162	0	1,033	1,033
FSC SOKOTO	0	0	0	0	0	0	235	85	332	83	139	44	706	212	918
FSTC DOMA	76	29	90	40	63	37	120	90	131	99	84	56	564	351	915
FGGC,BIDA	0	170	0	130	0	106	0	165	0	158	0	152	0	881	881
FGC, IBILLO	85	62	79	59	89	66	78	65	72	64	66	56	469	372	841
FGGC EFON ALAAYE,	0	136	0	148	0	137	0	126	0	140	0	110	0	797	797
FGGC KAZAURE	0	140	0	120	0	60	0	148	0	150	0	138	0	756	756
FSTC TUNGBO	108	80	80	41	74	30	82	42	72	42	59	45	475	280	755
FGGC, BAUCHI	0	99	0	73	0	77	0	157	0	171	0	122	0	699	699
FGGC, JALINGO	0	106	0	127	0	83	0	125	0	118	0	104	0	663	663
FSTC, JALINGO	40	29	86	10	54	9	118	12	160	16	103	14	561	90	651
FSTC DAYI	53	17	54	11	63	21	93	22	132	36	113	24	508	131	639
FGGC KEANA	0	133	0	140	0	38	0	153	0	105	0	52	0	621	621
FSTC MICHKA	63	38	53	36	47	35	68	40	76	35	63	51	370	235	605

FGGC, IMIRINGI	0	109	0	117	0	89	0	106	0	68	0	90	0	579	579
FGC, BIRNIN YAURI	43	21	54	34	74	36	74	34	79	32	63	23	387	180	567
FSTC LASSA	71	41	76	52	58	35	55	27	25	18	33	19	318	192	510
FGGC GUSAU	0	58	0	83	0	76	0	82	0	87	0	95	0	481	481
FGC BUNI YADI	91	12	127	13	80	7	100	23	0	0	0	0	398	55	453
FGC,NEW BUSSA	39	62	46	35	0	39	0	50	0	62	0	97	85	345	430
FGGC,BAJOGA	0	34	0	25	0	24	0	40	0	41	0	31	0	195	195
FSTC AMUZU	0	50	0	0	0	0	0	0	0	0	0	0	0	50	50
FGC ENUGU	0	0	0	0	0	0	0	0	0	0	0	0	0	0	0
FSTC,UMUAKA	0	0	0	0	0	0	0	0	0	0	0	0	0	0	0
FSTC,HADEJIA	0	0	0	0	0	0	0	0	0	0	0	0	0	0	0
FSTC GANDUJE,	0	0	0	0	0	0	0	0	0	0	0	0	0	0	0
FSTC UGUGU	0	0	0	0	0	0	0	0	0	0	0	0	0	0	0
FSTC KUTA SHIRORO	0	0	0	0	0	0	0	0	0	0	0	0	0	0	0
FSTC IJEBUN MUSIN	0	0	0	0	0	0	0	0	0	0	0	0	0	0	0
FSTC IGANGAN,	0	0	0	0	0	0	0	0	0	0	0	0	0	0	0

3.0 TEACHING AND NON-TEACHING STAFF:

3.1: Tables 8 to 12 Show Number of Teaching and Non-Teaching Staff by Geo-Political Zone and Qualifications

Table 8: Number of Teachers by Geo-Political Zone, Level and Gender

ZONE	NUMBER OF SCHOOLS	JUNIOR SECONDARY SCHOOLS			SENIOR SECONDARY SCHOOLS			BOTH JUNIOR AND SENIOR		
		M	F	T	M	F	T	M	F	T
NC	25	841	554	1395	418	523	941	1259	1077	2336
NE	15	218	153	371	243	361	604	461	514	975
NW	20	360	287	647	232	312	544	592	599	1191
SE	14	255	253	508	181	212	393	436	465	901
SS	17	633	544	1177	447	434	881	1080	978	2058
SW	19	893	633	1526	454	498	952	1347	1131	2478
Total	110	3200	2424	5624	1975	2340	4315	5175	4764	9939

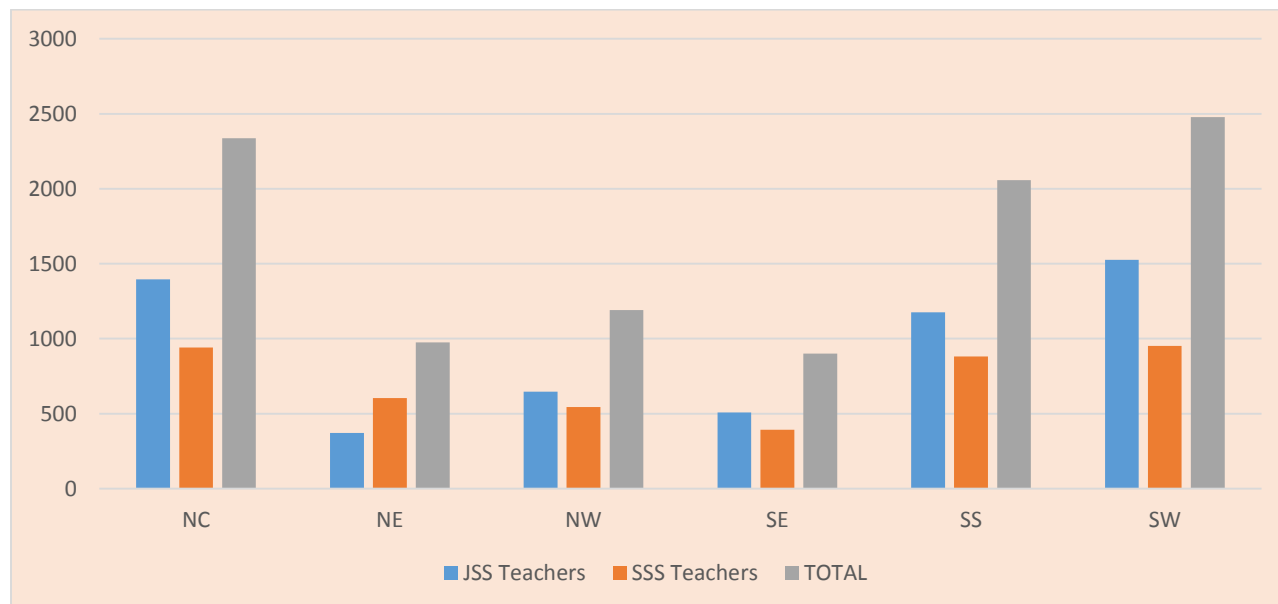


Figure 4: Number of Teachers by Geo-Political Zone, Level and Gender

Table 9: Number of Teaching and Non-Teaching Staff by State, School and Gender

State	School Name	TEACHING STAFF			NON-TEACHING STAFF			T STAFF		
		M	F	T	M	F	T	M	F	T
ABIA	FGC,OHAFIA	12	20	32	21	38	59	33	58	91
	FGGC,UMUAHIA	38	48	86	43	71	114	81	119	200
	FSTC,OHANSO	30	37	67	28	24	52	58	61	119
ADAMAWA	FGC,GANYE	33	26	59	40	29	69	73	55	128
	FGGC,YOLA	60	36	96	35	33	68	95	69	164
	FSTC,MICHIKA	22	44	66	38	19	57	60	63	123
AKWA IBOM	FGC,IKOT EKPENE	59	64	123	15	33	48	74	97	171
	FGGC,IKOT OBIO ITONG	28	41	69	30	30	60	58	71	129
	FSTC,UYO	60	47	107	29	57	86	89	104	193
ANAMBRA	FGC,NISE	24	52	76	31	59	90	55	111	166
	FGGC,NKWELLE EZUNAKA	41	20	61	16	50	66	57	70	127
	FSTC,AWKA	66	64	130	14	35	49	80	99	179
BAUCHI	FGC,AZARE	32	36	68	57	19	76	89	55	144
	FGGC BAUCHI	0	0	0	96	25	121	96	25	121
BAYELSA	FGC,ODI	23	21	44	22	11	33	45	32	77
	FGGC,IMIRINGI	58	56	114	27	19	46	85	75	160
	FSTC,TUNGBO	28	29	57	31	21	52	59	50	109
BENUE	FGC,OTOB	33	30	63	53	40	93	86	70	156
	FGC,VANDEIKYA	14	16	30	30	26	56	44	42	86
	FGGC,GBOKO	28	36	64	19	36	55	47	72	119
	FSTC,OTUKPO	37	30	67	25	22	47	62	52	114
BORNO	FGC,MAIDUGURI	84	74	158	50	35	85	134	109	243
	FGGC,MONGUNO	7	25	32	15	26	41	22	51	73
	FSTC,LASSA	16	17	33	40	25	65	56	42	98
CROSS RIVER	FGC,IKOM	19	16	35	28	53	81	47	69	116
	FGGC,CALABAR	69	61	130	33	46	79	102	107	209
	FSC,OGOJA	16	30	46	15	22	37	31	52	83
DELTA	FGC,WARRI	135	86	221	22	23	45	157	109	266
	FGGC,IBUSA	289	326	615	27	45	72	316	371	687
EBONYI	FGC,OKPOSI	29	27	56	9	23	32	38	50	88
	FGGC,EZZAMGBO	32	25	57	30	28	58	62	53	115
	FSTC,AMUZU	0	0	0	0	0	0	0	0	0
EDO	FGC,IBILLO	29	20	49	12	17	29	41	37	78
	FGGC,BENIN	65	52	117	22	46	68	87	98	185
	FSTC,UROMI	36	24	60	14	16	30	50	40	90
EKITI	FGC,IKOLE EKITI	38	39	77	9	28	37	47	67	114
	FSTC USI-EKITI	0	0	0	24	31	55	24	31	55
	FGGC,EFON ALAAYE	21	31	52	10	7	17	31	38	69
ENUGU	FGC,ENUGU	67	43	110	34	45	79	101	88	189
	FGGC,LEJJA	31	34	65	39	15	54	70	49	119
FCT	FGBC,GARKI	121	87	208	47	58	105	168	145	313
	FGC,KWALI	93	74	167	83	48	131	176	122	298
	FGC,RUBOCHI	29	25	54	0	0	0	29	25	54
	FGGC,ABAJI	56	56	112	36	33	69	92	89	181
	FGGC,BWARI	114	77	191	44	58	102	158	135	293
	FSTC,OROZO	0	0	0	0	0	0	0	0	0
GOMBE	FGC,BILLIRI	39	43	82	44	34	78	83	77	160
	FGGC,BAJOGA	27	48	75	45	15	60	72	63	135
IMO	FGC,OKIGWE	27	40	67	45	41	86	72	81	153
	FGGC,OWERRI	39	55	94	13	39	52	52	94	146
	FSTC,UMUAKA	0	0	0	0	0	0	0	0	0
JIGAWA	FGC,KIYAWA	28	19	47	39	13	52	67	32	99
	FGGC,KAZAURE	25	38	63	39	10	49	64	48	112
	FSTC,HADEJIA	0	3	3	5	0	5	5	3	8
KADUNA	FGC,KADUNA	66	46	112	56	42	98	122	88	210
	FGGC,ZARIA	35	30	65	70	68	138	105	98	203

	FSTC,KAFANCHAN	69	65	134	29	36	65	98	101	199
KANO	FGC,KANO	79	65	144	72	9	81	151	74	225
	FGGC,MINJIBIR	55	60	115	43	9	52	98	69	167
	FSTC,GANDUJE	0	3	3	4	0	4	4	3	7
KATSINA	FGC,DAURA	37	23	60	66	22	88	103	45	148
	FGGC,BAKORI	22	41	63	62	11	73	84	52	136
	FSTC,DAYI	10	25	35	24	0	24	34	25	59
KEBBI	FGC, BIRNIN YAURI	0	0	0	42	13	55	42	13	55
	FGGC GWANDU	0	0	0	54	12	66	54	12	66
	FSTC,ZURU	27	47	74	25	25	50	52	72	124
KOGI	FGC,UGWOLAWO	0	0	0	45	32	77	45	32	77
	FSTC UGUGU	0	0	0	0	0	0	0	0	0
	FGGC,KABBA	34	38	72	17	21	38	51	59	110
KWARA	FGC,ILORIN	123	131	254	43	50	93	166	181	347
	FGGC,OMU-ARAN	36	46	82	47	51	98	83	97	180
LAGOS	FGC,IJANIKIN	96	67	163	28	52	80	124	119	243
	FSTC,YABA	552	382	934	316	235	551	868	617	1485
	KC,LAGOS	47	45	92	28	23	51	75	68	143
	QC,LAGOS	92	58	150	21	82	103	113	140	253
NASARAWA	FGC,KEFFI	138	71	209	24	42	66	162	113	275
	FGGC,KEANA	22	31	53	21	20	41	43	51	94
	FSTC,DOMA	33	27	60	14	15	29	47	42	89
NIGER	FSTC KUTA SHIRORO	0	0	0	0	0	0	0	0	0
	FGA,SULEJA	89	79	168	56	50	106	145	129	274
	FGC,MINNA	73	58	131	65	65	130	138	123	261
	FGC,NEW BUSSA	13	24	37	25	12	37	38	36	74
	FGGC,BIDA	20	23	43	37	23	60	57	46	103
OGUN	FGC,ODOGBOLU	31	41	72	22	46	68	53	87	140
	FSTC IJEBUN MUSIN	0	0	0	17	27	44	17	27	44
	FGGC,SAGAMU	51	51	102	0	0	0	51	51	102
ONDO	FGC,IDOANI	27	39	66	33	36	69	60	75	135
	FGGC,AKURE	98	83	181	22	48	70	120	131	251
	FSTC,IKARE AKOKO	50	36	86	12	29	41	62	65	127
OSUN	FGC,IKIRUN	47	60	107	22	24	46	69	84	153
	FGGC,IPETUMODU	39	42	81	26	26	52	65	68	133
	FSTC,ILESA	94	62	156	39	43	82	133	105	238
OYO	FGC,OGBOMOSO	0	0	0	10	18	28	10	18	28
	FGGC,OYO	58	94	152	30	29	59	88	123	211
	FSTC,IGANGAN	6	1	7	0	3	3	6	4	10
PLATEAU	FGC,JOS	79	67	146	42	72	114	121	139	260
	FGGC,LANGTANG	74	51	125	39	32	71	113	83	196
RIVERS	FGC,PORT HARCOURT	107	56	163	37	45	82	144	101	245
	FGGC,ABULOMA	28	26	54	13	35	48	41	61	102
	FSTC,AHOADA	31	23	54	12	11	23	43	34	77
SOKOTO	FGC,SOKOTO	42	43	85	63	17	80	105	60	165
	FGGC,TAMBUWAL	2	3	5	30	16	46	32	19	51
	FSC,SOKOTO	28	26	54	34	24	58	62	50	112
TARABA	FGC,WUKARI	0	0	0	0	0	0	0	0	0
	FGGC,JALINGO	23	17	40	47	58	105	70	75	145
	FSTC,JALINGO	85	93	178	38	46	84	123	139	262
YOBE	FGC,BUNI YADI	13	18	31	32	16	48	45	34	79
	FGGC,POTISKUM	20	37	57	39	19	58	59	56	115
ZAMFARA	FGC,ANKA	41	46	87	29	8	37	70	54	124
	FGGC,GUSAU	26	16	42	37	18	55	63	34	97
Total		5175	4764	9939	3632	3343	6975	8807	8107	16914

3.2 TEACHER BY QUALIFICATIONS

Table 10: Number of Teachers by Qualifications in Junior Secondary Schools

State	School Name	NCE		HND		B.SC		B.Ed		BA(Ed)		PGDE		M.Ed		OTHERS		T	
		M	F	M	F	M	F	M	F	M	F	M	F	M	F	M	F	M	F
ABIA	FGC,OHAFIA	0	1	0	0	0	0	6	6	2	0	1	0	1	0	1	0	11	7
	FGGC,UMUAHIA	1	2	0	0	1	1	5	19	9	2	1	1	0	0	0	0	17	25
	FSTC,OHANSO	0	0	0	0	3	3	6	3	1	7	4	4	5	2	0	0	19	19
ADAMAWA	FGC,GANYE	10	1	0	0	2	4	3	0	2	1	0	0	0	3	0	0	17	9
	FGGC,YOLA	3	1	0	0	10	7	9	3	5	3	7	0	2	4	0	0	36	18
	FSTC,MICHIKA	0	0	2	0	11	10	2	0	0	13	0	0	0	0	0	0	15	23
AKWA IBOM	FGC,IKOT EKPENE	1	2	3	1	16	16	8	5	1	13	6	0	3	0	0	0	38	37
	FGGC,IKOT OBIO ITONG	2	1	1	1	0	5	12	10	7	0	4	0	1	0	0	0	27	17
	FSTC,UYO	0	1	0	0	0	5	6	17	13	0	9	0	3	0	0	0	31	23
ANAMBRA	FGC,NISE	2	13	1	1	3	4	3	5	1	2	1	0	0	3	0	0	11	28
	FGGC,NKWELLE EZUNAKA	0	7	2	5	2	5	0	0	0	0	0	1	0	1	0	0	4	19
	FSTC,AWKA	2	1	3	3	13	13	7	18	13	4	1	1	4	6	2	0	45	46
BAUCHI	FGC,AZARE	2	3	0	0	0	0	20	5	1	3	1	0	0	7	0	0	24	18
	FGGC BAUCHI	0	0	0	0	0	0	0	0	0	0	0	0	0	0	0	0	0	0
BAYELSA	FGC,ODI	1	2	0	0	1	1	5	2	10	0	1	0	1	0	0	0	19	5
	FGGC,IMIRINGI	6	9	1	0	3	3	9	5	2	5	2	0	3	9	4	0	30	31
	FSTC,TUNGBO	1	0	0	0	7	10	14	7	0	0	0	0	0	4	0		22	21
BENUE	FGC,OTOB	3	1	0	0	0	1	13	2	2	0	0	0	2	12	0	0	20	16
	FGC,VANDEIKYA	0	0	0	0	1	2	6	0	0	1	0	0	0	1	0	0	7	4
	FGGC,GBOKO	1	2	0	0	1	1	2	6	5	1	2	0	2	0	3	0	16	10
	FSTC,OTUKPO	15	3	5	3	10	0	0	0	0	9	0	2	0	0	0		30	17
BORNO	FGC,MAIDUGURI	11	5	3	1	8	8	14	4	6	10	5	0	0	0	4	0	51	28
	FGGC,MONGUNO	0	1	0	0	0	24	0	0	0	0	0	0	1	0	0	0	1	25
	FSTC,LASSA	3	0	3	0	2	2	2	1	0	0	0	0	0	5	0	0	10	8
CROSS RIVER	FGC,IKOM	6	1	0	0	2	4	4	0	0	0	0	0	0	0	0	0	12	5
	FGGC,CALABAR	3	11	3	2	9	9	2	12	4	2	6	3	5	6	8	0	40	45
	FSC,OGOJA	0	0	0	0	0	9	6	5	1	0	4	0	1	0	1	0	13	14
DELTA	FGC,WARRI	3	8	0	0	15	15	14	21	5	5	14	0	2	4	0	0	53	53
	FGGC,IBUSA	26	37	11	17	16	29	41	44	15	21	28	14	15	3	0	0	152	165
EBONYI	FGC,OKPOSI	1	0	2	0	4	4	5	2	6	6	1	0	1	0	0	0	20	12
	FGGC,EZZAMGBO	1	0	1	0	3	0	0	8	12	4	3	2	3	0	5	0	28	14
	FSTC,AMUZU	0	0	0	0	0	0	0	0	0	0	0	0	0	0	0	0	0	0
EDO	FGC,IBILLO	1	4	1	0	2	0	3	6	9	0	1	0	1	0	3	0	21	10
	FGGC,BENIN	2	6	0	0	4	2	13	24	6	2	3	0	7	6	0	0	35	40
	FSTC,UROMI	6	0	5	0	17	0	0	0	0	8	0	5	0	0	0	0	28	13
EKITI	FGC,IKOLE EKITI	3	0	1	0	1	1	9	12	5	1	1	0	0	0	2	0	22	14
	FSTC USI-EKITI	0	0	0	0	0	0	0	0	0	0	0	0	0	0	0	0	0	0

	FGGC,EFON ALAAYE	0	0	0	2	0	4	7	0	0	0	0	0	0	6	0	0	7	12	
ENUGU	FGC,ENUGU	2	9	0	0	4	11	2	5	20	1	12	1	6	0	0	0	46	27	
	FGGC,LEJJA	0	3	0	2	6	0	0	16	2	2	2	0	2	0	2	0	14	23	
	FGBC,GARKI	0	6	1	1	3	5	13	45	46	1	12	3	5	0	6	0	86	61	
FCT	FGC,KWALI	4	10	1	1	6	2	11	16	29	6	13	1	2	0	0	0	66	36	
	FGC,RUBOCHI	2	3	2	1	3	4	4	3	1	3	1	0	0	0	0	0	13	14	
	FGGC,ABAJI	2	2	2	1	3	3	8	5	5	4	4	0	3	8	0	0	27	23	
	FGGC,BWARI	2	6	0	2	0	4	14	36	14	0	18	0	6	7	3	0	57	55	
	FSTC,OROZO	0	0	0	0	0	0	0	0	0	0	0	0	0	0	0	0	0	0	0
	FGC,BILLIRI	2	1	0	0	0	9	15	3	5	0	4	0	4	0	0	0	30	13	
GOMBE	FGGC,BAJOGA	2	2	2	0	5	5	5	1	0	4	1	0	1	6	0	0	16	18	
	FGC,OKIGWE	0	1	0	0	5	7	8	12	0	0	2	0	4	0	0	0	19	20	
IMO	FGGC,OWERRI	0	0	1	0	4	6	10	4	3	3	2	0	1	0	0	0	21	13	
	FSTC,UMUAKA	0	0	0	0	0	0	0	0	0	0	0	0	0	0	0	0	0	0	
	FGC,KIYAWA	6	1	0	0	6	3	5	1	0	0	0	0	0	0	0	0	17	5	
JIGAWA	FGGC,KAZAURE	6	2	2	0	0	11	3	0	1	2	3	0	0	6	0	0	15	21	
	FSTC,HADEJIA	0	0	0	0	0	0	0	0	0	0	0	0	0	0	0	0	0	0	
	FGC,KADUNA	1	4	2	0	8	10	5	10	10	4	7	2	2	0	0	0	35	30	
KADUNA	FGGC,ZARIA	3	1	0	2	5	5	2	1	0	2	13	0	1	1	0	0	24	12	
	FSTC,KAFANCHAN	5	19	4	8	2	4	0	0	3	4	26	2	2	0	0	0	42	37	
	FGC,KANO	4	2	2	0	5	9	11	8	12	2	5	3	3	0	2	0	44	24	
KANO	FGGC,MINJIBIR	6	2	0	0	12	12	6	1	2	7	2	1	1	5	3	0	32	28	
	FSTC,GANDUJE	0	0	0	0	0	0	0	0	0	0	0	0	0	0	0	0	0	0	
	FGC,DAURA	0	0	0	0	0	0	0	2	6	0	3	0	1	2	15	0	25	4	
KATSINA	FGGC,BAKORI	10	2	1	0	0	3	2	9	1	0	1	1	1	0	2	0	18	15	
	FSTC,DAYI	0	0	0	0	0	9	6	2	2	0	0	0	0	0	0	0	8	11	
	FGC, BIRNIN YAURI	0	0	0	0	0	0	0	0	0	0	0	0	0	0	0	0	0	0	
KEBBI	FGGC GWANDU	0	0	0	0	0	0	0	0	0	0	0	0	0	0	0	0	0	0	
	FSTC,ZURU	3	6	2	1	1	1	2	1	1	7	3	3	0	7	2	0	14	26	
	FGC,UGWOLAWO	0	0	0	0	0	0	0	0	0	0	0	0	0	0	0	0	0	0	
KOGI	FSTC UGUGU	0	0	0	0	0	0	0	0	0	0	0	0	0	0	0	0	0	0	
	FGGC,KABBA	2	7	0	1	2	3	10	7	3	2	2	2	3	0	0	0	22	22	
	FGC,ILORIN	6	1	4	1	10	14	50	20	10	5	6	0	0	26	1	0	87	67	
KWARA	FGGC,OMU-ARAN	5	2	1	0	10	13	10	9	1	2	1	0	0	5	0	0	28	31	
	FGC,IJANIKIN	3	9	0	0	2	3	15	25	41	0	4	0	13	0	0	0	78	37	
LAGOS	FSTC,YABA	152	85	12	16	75	19	36	51	34	6	3	13	41	0	14	0	367	190	
	KC,LAGOS	0	4	0	1	3	6	15	15	0	0	5	1	14	0	0	0	37	27	
	QC,LAGOS	1	7	0	0	1	3	6	25	14	1	10	2	21	3	2	0	55	41	
NASARAWA	FGC,KEFFI	51	0	4	0	67	0	0	0	0	23	0	2	0	0	0	0	122	25	
	FGGC,KEANA	7	4	0	1	0	1	6	4	3	0	1	1	0	0	0	0	17	11	
	FSTC,DOMA	1	0	0	0	0	0	26	1	0	0	0	0	2	0	0	0	29	1	

NIGER	FSTC KUTA SHIRORO	0	0	0	0	0	0	0	0	0	0	0	0	0	0	0	0	0	0
	FGA,SULEJA	0	2	0	0	10	12	11	18	20	5	7	0	5	11	0	0	53	48
	FGC,MINNA	2	5	1	1	4	10	30	10	5	2	6	2	3	0	0	0	51	30
	FGC,NEW BUSSA	1	4	0	1	0	5	4	3	2	0	0	0	1	0	1	0	9	13
	FGGC,BIDA	1	1	1	0	1	1	7	2	1	3	1	0	0	3	0	0	12	10
OGUN	FGC,ODOGBOLU	1	0	0	0	2	4	13	12	4	3	2	2	1	2	0	0	23	23
	FSTC IJEBUN MUSIN	0	0	0	0	0	0	0	0	0	0	0	0	0	0	0	0	0	0
	FGGC,SAGAMU	3	3	2	2	3	2	8	9	8	5	4	0	4	0	1	0	33	21
ONDO	FGC,IDOANI	1	1	0	0	3	4	10	5	2	0	2	0	1	9	1	0	20	19
	FGGC,AKURE	2	6	2	4	7	11	20	25	8	4	8	1	2	5	2	0	51	56
	FSTC,IKARE AKOKO	1	3	1	1	0	1	30	8	5	0	0	0	0	5	0	0	37	18
OSUN	FGC,IKIRUN	0	2	0	0	2	5	10	15	7	10	6	0	2	0	1	0	28	32
	FGGC,IPETUMODU	1	2	0	0	0	0	11	16	12	0	0	0	0	6	0	0	24	24
	FSTC,ILESA	5	3	3	1	7	11	27	7	15	2	7	3	2	0	1	0	67	27
OYO	FGC,OGBOMOSO	0	0	0	0	0	0	0	0	0	0	0	0	0	0	0	0	0	0
	FGGC,OYO	0	3	0	0	0	0	0	89	22	0	12	0	7	0	3	0	44	92
	FSTC,IGANGAN	0	0	0	0	0	0	0	0	0	0	0	0	0	0	0	0	0	0
PLATEAU	FGC,JOS	3	10	3	0	4	12	14	9	8	2	4	1	10	0	1	0	47	34
	FGGC,LANGTANG	21	5	2	0	8	8	5	1	3	3	1	4	2	5	0	0	42	26
RIVERS	FGC,PORT HARCOURT	3	2	1	2	7	6	7	17	30	0	0	0	10	4	15	0	73	31
	FGGC,ABULOMA	1	1	2	1	1	1	1	8	2	5	3	0	4	0	1	0	15	16
	FSTC,AHOADA	0	0	0	0	0	4	13	13	0	1	2	0	4	0	5	0	24	18
SOKOTO	FGC,SOKOTO	2	2	1	1	9	3	9	11	4	4	2	2	0	2	0	0	27	25
	FGGC,TAMBUWAL	1	0	0	0	0	0	0	0	0	0	0	0	0	3	0	0	1	3
	FSC,SOKOTO	0	0	0	0	0	10	20	7	0	0	3	0	0	0	0	0	23	17
TARABA	FGC,WUKARI	0	0	0	0	0	0	0	0	0	0	0	0	0	0	0	0	0	0
	FGGC,JALINGO	7	1	0	0	0	3	8	3	2	0	0	0	0	0	2	0	19	7
	FSTC,JALINGO	5	3	3	0	7	16	18	14	0	6	4	0	1	12	2	0	40	51
YOBE	FGC,BUNI YADI	3	1	0	0	1	8	0	0	0	0	0	0	0	0	0	0	4	9
	FGGC,POTISKUM	0	3	0	0	0	3	15	2	3	0	1	0	0	2	0	0	19	10
ZAMFARA	FGC,ANKA	1	1	0	0	5	6	14	1	1	8	2	0	0	0	0	0	23	16
	FGGC,GUSAU	0	2	0	2	0	0	0	9	4	0	8	0	0	0	0	0	12	13
Total		469	390	113	91	496	533	867	904	580	277	357	86	261	227	121	0	3264	2508

Table 11: Number of Teachers by Qualifications in Senior Secondary Schools

State	School Name	NCE		HND		B.SC		B.Ed		BA(Ed)		PGDE		M.Ed		OTHERS		T		
		M	F	M	F	M	F	M	F	M	F	M	F	M	F	M	F	M	F	
ABIA	FGC,OHAFAIA	0	0	0	1	1	2	0	2	0	5	0	1	0	2	0	0	0	1	13
	FGGC,UMUAHIA	2	1	0	0	5	10	10	8	4	3	0	1	0	0	0	0	0	21	23
	FSTC,OHANSO	0	0	0	0	1	6	1	1	4	7	5	4	0	0	0	0	0	11	18
ADAMAWA	FGC,GANYE	11	1	0	0	0	3	2	3	0	4	0	0	3	6	0	0	0	16	17
	FGGC,YOLA	3	2	4	0	2	2	3	5	3	6	0	0	9	3	0	0	0	24	18
	FSTC,MICHIKA	0	0	2	0	1	3	4	4	0	13	0	1	0	0	0	0	0	7	21
AKWA IBOM	FGC,IKOT EKPENE	1	2	3	1	5	8	3	3	6	13	3	0	0	0	0	0	0	21	27
	FGGC,IKOT OBIO ITONG	0	0	0	0	1	0	0	13	0	7	0	3	0	1	0	0	0	1	24
	FSTC,UYO	1	2	1	2	0	6	13	3	9	9	5	0	0	2	0	0	0	29	24
ANAMBRA	FGC,NISE	2	14	2	2	2	3	0	2	2	3	0	0	5	0	0	0	0	13	24
	FGGC,NKWELLE EZUNAKA	0	0	0	0	15	0	0	0	8	1	2	0	12	0	0	0	0	37	1
	FSTC,AWKA	2	1	3	3	7	7	0	0	1	4	4	1	4	2	0	0	0	21	18
BAUCHI	FGC,AZARE	0	0	0	0	0	8	6	3	1	5	0	2	1	0	0	0	0	8	18
	FGGC BAUCHI	0	0	0	0	0	0	0	0	0	0	0	0	0	0	0	0	0	0	0
BAYELSA	FGC,ODI	1	1	0	1	0	4	3	5	0	1	0	4	0	0	0	0	0	4	16
	FGGC,IMIRINGI	1	1	2	1	6	9	4	4	2	5	0	1	13	4	0	0	0	28	25
	FSTC,TUNGBO	1	0	1	0	1	2	2	2	0	2	0	0	1	2	0	0	0	6	8
BENUE	FGC,OTObI	0	0	4	0	1	2	0	6	1	5	0	0	7	1	0	0	0	13	14
	FGC,VANDEIKYA	1	2	2	0	0	0	3	3	0	5	0	0	1	2	0	0	0	7	12
	FGGC,GBOKO	1	3	1	0	3	6	5	6	2	4	0	2	0	5	0	0	0	12	26
	FSTC,OTUKPO	0	0	0	0	0	13	4	0	3	0	0	0	0	0	0	0	0	7	13
BORNO	FGC,MAIDUGURI	11	5	3	1	5	14	9	9	5	10	0	0	0	7	0	0	0	33	46
	FGGC,MONGUNO	3	0	1	0	2	0	0	0	0	0	0	0	0	0	0	0	0	6	0
	FSTC,LASSA	0	0	3	0	0	2	1	1	0	2	0	1	2	3	0	0	0	6	9
CROSS RIVER	FGC,IKOM	0	0	0	0	0	2	5	8	1	1	1	0	0	0	0	0	0	7	11
	FGGC,CALABAR	4	7	2	2	10	2	2	1	3	3	4	0	4	1	0	0	0	29	16
	FSC,OGOJA	0	3	2	0	1	0	0	3	0	5	0	3	0	2	0	0	0	3	16
DELTA	FGC,WARRI	3	8	1	0	55	14	6	6	14	5	2	0	1	0	0	0	0	82	33
	FGGC,IBUSA	29	34	19	31	36	39	16	13	18	23	18	21	1	0	0	0	0	137	161
EBONYI	FGC,OKPOSI	1	0	2	0	0	5	4	4	1	6	1	0	0	0	0	0	0	9	15
	FGGC,EZZAMGBO	0	4	0	0	0	7	4	0	0	0	0	0	0	0	0	0	0	4	11
	FSTC,AMUZU	0	0	0	0	0	0	0	0	0	0	0	0	0	0	0	0	0	0	0
EDO	FGC,IBILLO	2	2	1	0	0	3	3	3	2	1	0	1	0	0	0	0	0	8	10
	FGGC,BENIN	0	0	0	0	1	3	4	1	11	5	1	3	13	0	0	0	0	30	12
	FSTC,UROMI	0	0	0	0	0	11	8	0	0	0	0	0	0	0	0	0	0	8	11
EKITI	FGC,IKOLE EKITI	3	0	1	0	4	10	7	7	1	1	0	0	0	7	0	0	0	16	25
	FSTC USI-EKITI	0	0	0	0	0	0	0	0	0	0	0	0	0	0	0	0	0	0	0
	FGGC,EFON ALAAYE	3	8	0	0	0	0	0	8	0	1	3	1	8	1	0	0	0	14	19

ENUGU	FGC,ENUGU	1	0	0	1	6	3	3	5	6	6	5	1	0	0	0	0	21	16
	FGGC,LEJJA	0	3	0	2	6	6	8	0	1	0	2	0	0	0	0	0	17	11
FCT	FGBC,GARKI	1	2	3	0	3	8	14	4	9	3	2	1	3	8	0	0	35	26
	FGC,KWALI	2	3	1	1	5	11	13	14	4	7	2	2	0	0	0	0	27	38
	FGC,RUBOCHI	3	2	3	3	4	3	4	1	2	1	0	1	0	0	0	0	16	11
	FGGC,ABAJI	0	3	3	0	4	9	9	12	3	5	0	2	10	2	0	0	29	33
	FGGC,BWARI	10	7	10	2	22	0	0	5	5	5	5	3	5	0	0	0	57	22
	FSTC,OROZO	0	0	0	0	0	0	0	0	0	0	0	0	0	0	0	0	0	0
GOMBE	FGC,BILLIRI	0	0	7	2	2	0	0	23	0	4	0	1	0	0	0	0	9	30
	FGGC,BAJOGA	2	2	2	0	2	5	5	5	0	4	0	0	0	14	0	0	11	30
IMO	FGC,OKIGWE	0	0	3	0	5	10	0	9	0	0	0	0	0	1	0	0	8	20
	FGGC,OWERRI	3	6	0	1	5	12	5	10	4	3	1	4	0	6	0	0	18	42
	FSTC,UMUAKA	0	0	0	0	0	0	0	0	0	0	0	0	0	0	0	0	0	0
JIGAWA	FGC,KIYAWA	3	0	2	0	2	2	4	5	0	5	0	2	0	0	0	0	11	14
	FGGC,KAZAURE	3	1	2	0	1	4	4	4	0	8	0	0	0	0	0	0	10	17
	FSTC,HADEJIA	0	0	0	0	0	3	0	0	0	0	0	0	0	0	0	0	0	3
KADUNA	FGC,KADUNA	0	0	2	0	16	4	5	6	7	4	1	2	0	0	0	0	31	16
	FGGC,ZARIA	0	0	0	0	5	2	2	2	4	13	0	1	0	0	0	0	11	18
	FSTC,KAFANCHAN	0	0	15	3	9	5	0	7	3	9	0	4	0	0	0	0	27	28
KANO	FGC,KANO	4	0	2	1	5	6	17	15	4	8	3	4	0	7	0	0	35	41
	FGGC,MINJIBIR	6	2	0	0	1	6	11	11	2	7	1	1	2	5	0	0	23	32
	FSTC,GANDUJE	0	0	0	0	0	3	0	0	0	0	0	0	0	0	0	0	0	3
KATSINA	FGC,DAURA	7	3	0	1	5	0	0	1	0	11	0	0	0	3	0	0	12	19
	FGGC,BAKORI	0	0	1	0	2	0	1	0	0	13	0	0	0	13	0	0	4	26
	FSTC,DAYI	1	1	1	0	0	0	0	5	0	1	0	2	0	5	0	0	2	14
KEBBI	FGC, BIRNIN YAURI	0	0	0	0	0	0	0	0	0	0	0	0	0	0	0	0	0	0
	FGGC GWANDU	0	0	0	0	0	0	0	0	0	0	0	0	0	0	0	0	0	0
	FSTC,ZURU	0	0	2	1	1	2	0	0	3	7	0	3	7	8	0	0	13	21
KOGI	FGC,UGWOLAWO	0	0	0	0	0	0	0	0	0	0	0	0	0	0	0	0	0	0
	FSTC UGUGU	0	0	0	0	0	0	0	0	0	0	0	0	0	0	0	0	0	0
	FGGC,KABBA	0	0	0	1	2	3	6	6	2	3	2	3	0	0	0	0	12	16
KWARA	FGC,ILORIN	0	0	0	0	3	30	3	15	5	10	3	7	22	2	0	0	36	64
	FGGC,OMU-ARAN	0	0	0	0	5	7	1	2	0	5	0	1	2	0	0	0	8	15
LAGOS	FGC,IJANIKIN	0	0	1	0	12	2	5	9	0	3	0	1	0	15	0	0	18	30
	FSTC,YABA	56	41	29	48	35	36	39	36	2	4	24	14	0	13	0	0	185	192
	KC,LAGOS	0	0	0	0	3	4	0	0	1	8	6	6	0	0	0	0	10	18
	QC,LAGOS	0	0	1	1	8	2	6	8	4	3	11	3	7	0	0	0	37	17
NASARAWA	FGC,KEFFI	0	0	0	0	0	46	16	0	0	0	0	0	0	0	0	16	46	
	FGGC,KEANA	3	4	1	1	0	11	1	3	0	1	0	0	0	0	0	5	20	
	FSTC,DOMA	0	0	0	0	0	17	4	7	0	1	0	1	0	0	0	4	26	

NIGER	FSTC KUTA SHIRORO	0	0	0	0	0	0	0	0	0	0	0	0	0	0	0	0	0	0
	FGA,SULEJA	0	0	3	3	10	9	6	9	6	6	0	4	11	0	0	0	36	31
	FGC,MINNA	0	0	3	2	2	7	9	10	6	6	2	3	0	0	0	0	22	28
	FGC,NEW BUSSA	3	0	0	0	1	1	0	5	0	5	0	0	0	0	0	0	4	11
	FGGC,BIDA	1	0	1	1	1	2	1	3	2	5	0	1	2	1	0	0	8	13
OGUN	FGC,ODOGBOLU	1	0	0	1	1	10	2	2	2	2	2	2	0	1	0	0	8	18
	FSTC IJEBUN MUSIN	0	0	0	0	0	0	0	0	0	0	0	0	0	0	0	0	0	0
	FGGC,SAGAMU	0	0	0	0	3	8	10	10	5	5	0	5	0	2	0	0	18	30
ONDO	FGC,IDOANI	1	1	0	0	1	8	1	4	4	5	0	1	0	1	0	0	7	20
	FGGC,AKURE	0	0	0	0	15	11	3	7	8	7	2	1	19	1	0	0	47	27
	FSTC,IKARE AKOKO	0	0	4	0	2	0	0	8	0	9	0	0	7	1	0	0	13	18
OSUN	FGC,IKIRUN	0	0	2	3	2	8	7	9	8	5	0	3	0	0	0	0	19	28
	FGGC,IPETUMODU	0	0	1	0	0	10	8	8	0	0	0	0	6	0	0	0	15	18
	FSTC,ILESA	0	0	3	1	2	7	16	15	6	6	0	6	0	0	0	0	27	35
OYO	FGC,OGBOMOSO	0	0	0	0	0	0	0	0	0	0	0	0	0	0	0	0	0	0
	FGGC,OYO	0	0	0	2	14	0	0	0	0	0	0	0	0	0	0	0	14	2
	FSTC,IGANGAN	0	0	0	0	0	1	2	0	1	0	0	0	3	0	0	0	6	1
PLATEAU	FGC,JOS	2	2	4	1	10	8	12	7	2	6	2	7	0	2	0	0	32	33
	FGGC,LANGTANG	21	5	2	0	3	5	3	3	1	3	2	4	0	5	0	0	32	25
RIVERS	FGC,PORT HARCOURT	0	0	2	2	10	4	8	10	0	0	3	2	11	7	0	0	34	25
	FGGC,ABULOMA	1	1	2	2	3	1	0	0	3	5	4	1	0	0	0	0	13	10
	FSTC,AHOADA	0	0	0	1	4	0	1	2	1	0	1	0	0	2	0	0	7	5
SOKOTO	FGC,SOKOTO	0	0	0	0	4	7	8	10	3	1	0	0	0	0	0	0	15	18
	FGGC,TAMBUWAL	0	0	0	0	0	0	0	0	0	0	0	0	1	0	0	0	1	0
	FSC,SOKOTO	1	1	1	0	3	0	0	0	0	7	0	0	0	1	0	0	5	9
TARABA	FGC,WUKARI	0	0	0	0	0	0	0	0	0	0	0	0	0	0	0	0	0	0
	FGGC,JALINGO	0	0	2	0	2	0	0	6	0	4	0	0	0	0	0	0	4	10
	FSTC,JALINGO	12	6	6	0	2	9	3	9	3	15	0	0	19	3	0	0	45	42
YOBE	FGC,BUNI YADI	2	0	0	0	2	2	5	3	0	4	0	0	0	0	0	0	9	9
	FGGC,POTISKUM	0	1	0	0	1	0	0	15	0	2	0	3	0	6	0	0	1	27
ZAMFARA	FGC,ANKA	1	1	0	0	1	7	14	14	2	8	0	0	0	0	0	0	18	30
	FGGC,GUSAU	0	2	0	1	6	0	0	0	4	0	0	0	4	0	0	0	14	3
Total		237	201	187	134	449	593	437	536	240	443	135	163	226	186	0	0	1911	2256

Table 12: Number of Teachers and Qualified Teachers by State, School, Level and Gender

State	School Name	JUNIOR SECONDARY SCHOOLS						SENIOR SECONDARY SCHOOLS						BOTH JUNIOR AND SENIOR					
		ALL TEACHERS			QUALIFIDIES TEACHERS			ALL TEACHERS			QUALIFIDIES TEACHERS			ALL TEACHERS			QUALIFIDIES TEACHERS		
		M	F	T	M	F	T	M	F	T	M	F	T	M	F	T	M	F	T
ABIA	FGC,OHAFIA	11	7	18	10	7	17	1	13	14	0	10	10	12	20	32	10	17	27
	FGGC,UMUAHIA	17	25	42	16	24	40	21	23	44	16	13	29	38	48	86	32	37	69
	FSTC,OHANSO	19	19	38	16	16	32	11	18	29	10	12	22	30	37	67	26	28	54
ADAMAWA	FGC,GANYE	17	9	26	15	5	20	16	17	33	16	14	30	33	26	59	31	19	50
	FGGC,YOLA	36	18	54	26	11	37	24	18	42	18	16	34	60	36	96	44	27	71
	FSTC,MICHIKA	15	23	38	2	13	15	7	21	28	4	18	22	22	44	66	6	31	37
AKWA IBOM	FGC,IKOT EKPENE	38	37	75	19	20	39	21	27	48	13	18	31	59	64	123	32	38	70
	FGGC,IKOT OBIO ITONG	27	17	44	26	11	37	1	24	25	0	24	24	28	41	69	26	35	61
	FSTC,UYO	31	23	54	31	18	49	29	24	53	28	16	44	60	47	107	59	34	93
ANAMBRA	FGC,NISE	11	28	39	7	23	30	13	24	37	9	19	28	24	52	76	16	42	58
	FGGC,NKWELLE Onit	4	19	23	0	9	9	37	1	38	22	1	23	41	20	61	22	10	32
	FSTC,AWKA	45	46	91	27	30	57	21	18	39	11	8	19	66	64	130	38	38	76
BAUCHI	FGC,AZARE	24	18	42	24	18	42	8	18	26	8	10	18	32	36	68	32	28	60
	FGGC BAUCHI	0	0	0	0	0	0	0	0	0	0	0	0	0	0	0	0	0	0
BAYELSA	FGC,ODI	19	5	24	18	4	22	4	16	20	4	11	15	23	21	44	22	15	37
	FGGC,IMIRINGI	30	31	61	22	28	50	28	25	53	20	15	35	58	56	114	42	43	85
	FSTC,TUNGBO	22	21	43	15	11	26	6	8	14	4	6	10	28	29	57	19	17	36
BENUE	FGC,OTObI	20	16	36	20	15	35	13	14	27	8	12	20	33	30	63	28	27	55
	FGC,VANDEIKYA	7	4	11	6	2	8	7	12	19	5	12	17	14	16	30	11	14	25
	FGGC,GBOKO	16	10	26	12	9	21	12	26	38	8	20	28	28	36	64	20	29	49
	FSTC,OTUKPO	30	17	47	15	14	29	7	13	20	7	0	7	37	30	67	22	14	36
BORNO	FGC,MAIDUGURI	51	28	79	36	19	55	33	46	79	25	31	56	84	74	158	61	50	111
	FGGC,MONGUNO	1	25	26	1	1	2	6	0	6	3	0	3	7	25	32	4	1	5
	FSTC,LASSA	10	8	18	5	6	11	6	9	15	3	7	10	16	17	33	8	13	21
CROSS RIVER	FGC,IKOM	12	5	17	10	1	11	7	11	18	7	9	16	19	16	35	17	10	27
	FGGC,CALABAR	40	45	85	20	34	54	29	16	45	17	12	29	69	61	130	37	46	83
	FSC,OGOJA	13	14	27	12	5	17	3	16	19	0	16	16	16	30	46	12	21	33
DELTA	FGC,WARRI	53	53	106	38	38	76	82	33	115	26	19	45	135	86	221	64	57	121
	FGGC,IBUSA	152	165	317	125	119	244	137	161	298	82	91	173	289	326	615	207	210	417
EBONYI	FGC,OKPOSI	20	12	32	14	8	22	9	15	24	7	10	17	29	27	56	21	18	39
	FGGC,EZZAMGBO	28	14	42	19	14	33	4	11	15	4	4	8	32	25	57	23	18	41
	FSTC,AMUZU	0	0	0	0	0	0	0	0	0	0	0	0	0	0	0	0	0	0
EDO	FGC,IBILLO	21	10	31	15	10	25	8	10	18	7	7	14	29	20	49	22	17	39
	FGGC,BENIN	35	40	75	31	38	69	30	12	42	29	9	38	65	52	117	60	47	107
	FSTC,UROMI	28	13	41	6	13	19	8	11	19	8	0	8	36	24	60	14	13	27
EKITI	FGC,IKOLE EKITI	22	14	36	18	13	31	16	25	41	11	15	26	38	39	77	29	28	57
	FSTC USI-EKITI	0	0	0	0	0	0	0	0	0	0	0	0	0	0	0	0	0	0
	FGGC,EFON ALAAYE	7	12	19	7	6	13	14	19	33	14	19	33	21	31	52	21	25	46
ENUGU	FGC,ENUGU	46	27	73	42	16	58	21	16	37	15	12	27	67	43	110	57	28	85
	FGGC,LEJJA	14	23	37	6	21	27	17	11	28	11	3	14	31	34	65	17	24	41

FCT	FGBC,GARKI	86	61	147	76	55	131	35	26	61	29	18	47	121	87	208	105	73	178
	FGC,KWALI	66	36	102	59	33	92	27	38	65	21	26	47	93	74	167	80	59	139
	FGC,RUBOCHI	13	14	27	8	9	17	16	11	27	9	5	14	29	25	54	17	14	31
	FGGC,ABAJI	27	23	50	22	19	41	29	33	62	22	24	46	56	56	112	44	43	87
	FGGC,BWARI	57	55	112	54	49	103	57	22	79	25	20	45	114	77	191	79	69	148
GOMBE	FSTC,OROZO	0	0	0	0	0	0	0	0	0	0	0	0	0	0	0	0	0	0
	FGC,BILLIRI	30	13	43	30	4	34	9	30	39	0	28	28	39	43	82	30	32	62
IMO	FGGC,BAJOGA	16	18	34	9	13	22	11	30	41	7	25	32	27	48	75	16	38	54
	FGC,OKIGWE	19	20	39	14	13	27	8	20	28	0	10	10	27	40	67	14	23	37
	FGGC,OWERRI	21	13	34	16	7	23	18	42	60	13	29	42	39	55	94	29	36	65
JIGAWA	FSTC,UMUAKA	0	0	0	0	0	0	0	0	0	0	0	0	0	0	0	0	0	0
	FGC,KIYAWA	17	5	22	11	2	13	11	14	25	7	12	19	28	19	47	18	14	32
	FGGC,KAZAURE	15	21	36	13	10	23	10	17	27	7	13	20	25	38	63	20	23	43
KADUNA	FSTC,HADEJIA	0	0	0	0	0	0	0	3	3	0	0	0	0	3	3	0	0	0
	FGC,KADUNA	35	30	65	25	20	45	31	16	47	13	12	25	66	46	112	38	32	70
	FGGC,ZARIA	24	12	36	19	5	24	11	18	29	6	16	22	35	30	65	25	21	46
KANO	FSTC,KAFANCHAN	42	37	79	36	25	61	27	28	55	3	20	23	69	65	134	39	45	84
	FGC,KANO	44	24	68	35	15	50	35	41	76	28	34	62	79	65	144	63	49	112
	FGGC,MINJIBIR	32	28	60	17	16	33	23	32	55	22	26	48	55	60	115	39	42	81
KATSINA	FSTC,GANDUJE	0	0	0	0	0	0	0	3	3	0	0	0	0	3	3	0	0	0
	FGC,DAURA	25	4	29	10	4	14	12	19	31	7	18	25	37	23	60	17	22	39
	FGGC,BAKORI	18	15	33	15	12	27	4	26	30	1	26	27	22	41	63	16	38	54
KEBBI	FSTC,DAYI	8	11	19	8	2	10	2	14	16	1	14	15	10	25	35	9	16	25
	FGC, BIRNIN YAURI	0	0	0	0	0	0	0	0	0	0	0	0	0	0	0	0	0	0
	FGGC GWANDU	0	0	0	0	0	0	0	0	0	0	0	0	0	0	0	0	0	0
KOGI	FSTC,ZURU	14	26	40	9	24	33	13	21	34	10	18	28	27	47	74	19	42	61
	FGC,UGWOLAWO	0	0	0	0	0	0	0	0	0	0	0	0	0	0	0	0	0	0
	FSTC UGUGU	0	0	0	0	0	0	0	0	0	0	0	0	0	0	0	0	0	0
KWARA	FGGC,KABBA	22	22	44	20	18	38	12	16	28	10	12	22	34	38	72	30	30	60
	FGC,I Lorin	87	67	154	72	52	124	36	64	100	33	34	67	123	131	254	105	86	191
	FGGC,OMU-ARAN	28	31	59	17	18	35	8	15	23	3	8	11	36	46	82	20	26	46
LAGOS	FGC,IJANIKIN	78	37	115	76	34	110	18	30	48	5	28	33	96	67	163	81	62	143
	FSTC,YABA	367	190	557	266	155	421	185	192	377	121	108	229	552	382	934	387	263	650
	KC,LAGOS	37	27	64	34	20	54	10	18	28	7	14	21	47	45	92	41	34	75
NASARAWA	QC,LAGOS	55	41	96	52	38	90	37	17	54	28	14	42	92	58	150	80	52	132
	FGC,KEFFI	122	25	147	51	25	76	16	46	62	16	0	16	138	71	209	67	25	92
	FGGC,KEANA	17	11	28	17	9	26	5	20	25	4	8	12	22	31	53	21	17	38
NIGER	FSTC,DOMA	29	1	30	29	1	30	4	26	30	4	9	13	33	27	60	33	10	43
	FSTC KUTA SHIRORO	0	0	0	0	0	0	0	0	0	0	0	0	0	0	0	0	0	0
	FGA,SULEJA	53	48	101	43	36	79	36	31	67	23	19	42	89	79	168	66	55	121
	FGC,MINNA	51	30	81	46	19	65	22	28	50	17	19	36	73	58	131	63	38	101
	FGC,NEW BUSSA	9	13	22	8	7	15	4	11	15	3	10	13	13	24	37	11	17	28
OGUN	FGGC,BIDA	12	10	22	10	9	19	8	13	21	6	10	16	20	23	43	16	19	35
	FGC,ODOGBOLU	23	23	46	21	19	40	8	18	26	7	7	14	31	41	72	28	26	54
OGUN	FSTC IJEBUN MUSIN	0	0	0	0	0	0	0	0	0	0	0	0	0	0	0	0	0	0

	FGGC,SAGAMU	33	21	54	27	17	44	18	30	48	15	22	37	51	51	102	42	39	81
ONDO	FGC,IDOANI	20	19	39	16	15	31	7	20	27	6	12	18	27	39	66	22	27	49
	FGGC,AKURE	51	56	107	40	41	81	47	27	74	32	16	48	98	83	181	72	57	129
	FSTC,IKARE AKOKO	37	18	55	36	16	52	13	18	31	7	18	25	50	36	86	43	34	77
OSUN	FGC,IKIRUN	28	32	60	25	27	52	19	28	47	15	17	32	47	60	107	40	44	84
	FGGC,IPETUMODU	24	24	48	24	24	48	15	18	33	14	8	22	39	42	81	38	32	70
	FSTC,Ilesa	67	27	94	56	15	71	27	35	62	22	27	49	94	62	156	78	42	120
OYO	FGC,OGBOMOSO	0	0	0	0	0	0	0	0	0	0	0	0	0	0	0	0	0	0
	FGGC,OYO	44	92	136	41	92	133	14	2	16	0	0	0	58	94	152	41	92	133
	FSTC,IGANGAN	0	0	0	0	0	0	6	1	7	6	0	6	6	1	7	6	0	6
PLATEAU	FGC,JOS	47	34	81	39	22	61	32	33	65	18	24	42	79	67	146	57	46	103
	FGGC,LANGTANG	42	26	68	32	18	50	32	25	57	27	20	47	74	51	125	59	38	97
RIVERS	FGC,PORT HARCOURT	73	31	104	50	23	73	34	25	59	22	19	41	107	56	163	72	42	114
	FGGC,ABULOMA	15	16	31	11	14	25	13	10	23	8	7	15	28	26	54	19	21	40
	FSTC,AHOADA	24	18	42	19	14	33	7	5	12	3	4	7	31	23	54	22	18	40
SOKOTO	FGC,SOKOTO	27	25	52	17	21	38	15	18	33	11	11	22	42	43	85	28	32	60
	FGGC,TAMBUWAL	1	3	4	1	3	4	1	0	1	1	0	1	2	3	5	2	3	5
	FSC,SOKOTO	23	17	40	23	7	30	5	9	14	1	9	10	28	26	54	24	16	40
TARABA	FGC,WUKARI	0	0	0	0	0	0	0	0	0	0	0	0	0	0	0	0	0	0
	FGGC,JALINGO	19	7	26	17	4	21	4	10	14	0	10	10	23	17	40	17	14	31
	FSTC,JALINGO	40	51	91	28	35	63	45	42	87	37	33	70	85	93	178	65	68	133
YOBE	FGC,BUNI YADI	4	9	13	3	1	4	9	9	18	7	7	14	13	18	31	10	8	18
	FGGC,POTISKUM	19	10	29	19	7	26	1	27	28	0	27	27	20	37	57	19	34	53
ZAMFARA	FGC,ANKA	23	16	39	18	10	28	18	30	48	17	23	40	41	46	87	35	33	68
	FGGC,GUSAU	12	13	25	12	11	23	14	3	17	8	2	10	26	16	42	20	13	33
Total		3264	2508	5772	2534	1884	4418	1911	2256	4167	1275	1529	2804	5175	4764	9939	3809	3413	7222

Table 13: Summary of Qualified Teachers by Zone, Level and Gender:

ZONE	NUMBER OF SCHOOLS	JUNIOR SECONDARY SCHOOLS						SENIOR SECONDARY SCHOOLS						BOTH JUNIOR AND SENIOR					
		ALL TEACHERS			QUALIFIDIES TEACHERS			ALL TEACHERS			QUALIFIDIES TEACHERS			ALL TEACHERS			QUALIFIDIES TEACHERS		
		M	F	T	M	F	T	M	F	T	M	F	T	M	F	T	M	F	T
NC	25	841	554	1395	656	439	1095	418	523	941	298	310	608	1259	1077	2336	954	749	1703
NE	15	218	153	371	153	131	284	243	361	604	168	282	450	461	514	975	452	490	942
NW	20	360	287	647	269	187	456	232	312	544	143	254	397	592	599	1191	412	441	853
SE	14	255	253	508	187	188	375	181	212	393	118	131	249	436	465	901	305	319	624
SS	17	633	544	1177	468	401	869	447	434	881	278	283	561	1080	978	2058	746	684	1430
SW	19	893	633	1526	739	532	1271	454	498	952	310	325	635	1347	1131	2478	1049	857	1906
T	110	3200	2424	5624	2472	1878	4350	1975	2340	4315	1315	1585	2900	5175	4764	9939	3918	3540	7458

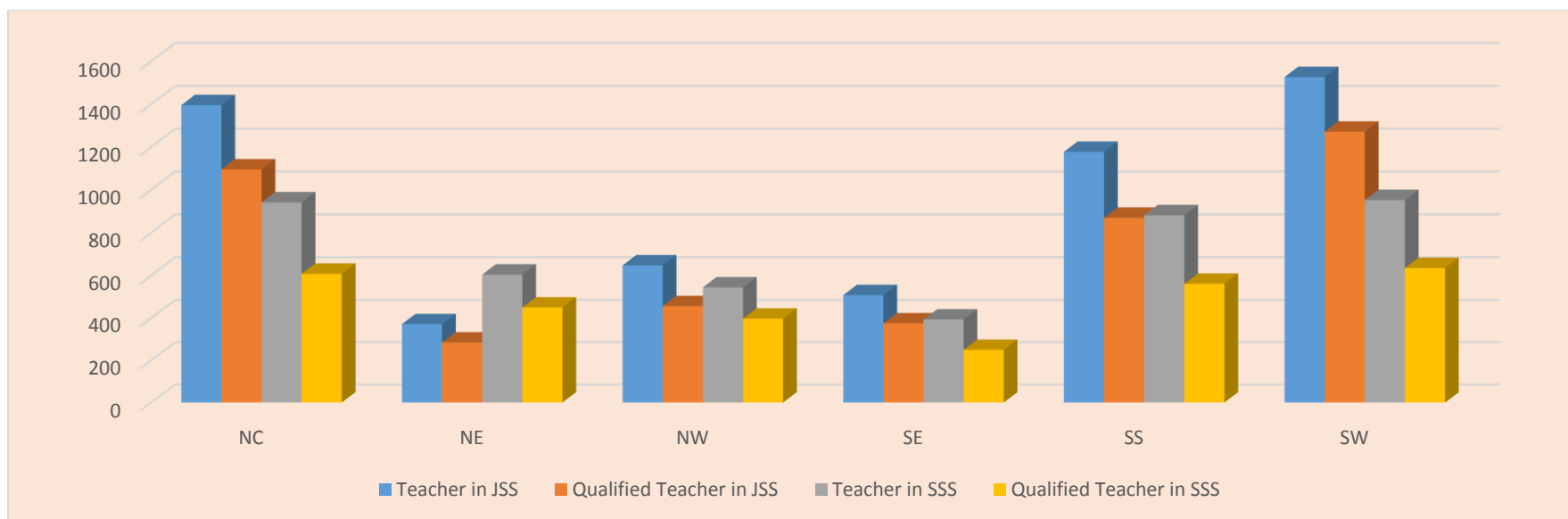


Figure 5: Summary of Qualified Teachers by Zone, Level and Gender

4.0 FACILITIES:

4.1 Tables 14 to 16 Show Number of Classrooms, Toilets and Other Facilities

Table 14: Number and Condition of Classrooms by State and School:

State	School Name	Classroom Good	
		Good	Bad
ABIA	FGC,OHAFIA	0	43
	FGGC,UMUAHIA	30	25
	FSTC,OHANSO	9	24
ADAMAWA	FGC,GANYE	27	0
	FGGC,YOLA	58	5
	FSTC,MICHIKA	0	0
AKWA IBOM	FGC,IKOT EKPENE	54	0
	FGGC,IKOT OBIO ITONG	36	0
	FSTC,UYO	25	5
ANAMBRA	FGC,NISE	53	0
	FGGC,NKWELLE EZUNAKA	54	0
	FSTC,AWKA	0	0
BAUCHI	FGC,AZARE	24	8
	FGGC,BAUCHI	42	0
BAYELSA	FGC,ODI	21	6
	FGGC,IMIRINGI	0	0
	FSTC,TUNGBO	12	12
BENUE	FGC,OTOBİ	24	5
	FGC,VANDEIKYA	5	21
	FGGC,GBOKO	33	0
	FSTC,OTUKPO	18	12
BORNO	FGC,MAIDUGURI	42	0
	FGGC,MONGUNO	60	0
	FSTC,LASSA	16	16
CROSS RIVER	FGC,IKOM	12	4
	FGGC,CALABAR	25	10
	FSC,OGOJA	20	8
DELTA	FGC,WARRI	0	0
	FGGC,IBUSA	34	8
EBONYI	FGC,OKPOSI	40	2
	FGGC,EZZAMGBO	30	6
	FSTC,AMUZU	20	0
EDO	FGC,IBILLO	0	0
	FGGC,BENIN	53	0
	FSTC,UROMI	40	2
EKITI	FGC,IKOLE EKITI	28	6
	FGGC,EFON ALAAYE	0	0
	FSTC,USI-EKITI	25	8
ENUGU	FGC,ENUGU	49	11
	FGGC,LEJJA	0	40
FCT	FGBC,GARKI	32	0
	FGC,KWALI	53	0
	FGC,RUBOCHI	35	0
	FGGC,ABAJI	38	0
	FGGC,BWARI	42	18
	FSTC,OROZO	58	0
GOMBE	FGC,BILLIRI	14	18
	FGGC,BAJOGA	8	20
IMO	FGC,OKIGWE	55	0
	FGGC,OWERRI	50	10
	FSTC,UMUAKA	0	0
JIGAWA	FGC,KIYAWA	17	7
	FGGC,KAZAURE	24	6
	FSTC,HADEJIA	12	8

KADUNA	FGC,KADUNA	40	25
	FGGC,ZARIA	20	16
	FSTC,KAFANCHAN	23	6
KANO	FGC,KANO	49	0
	FGGC,MINJIBIR	22	11
	FSTC,GANDUJE	10	0
KATSINA	FGC,DAURA	16	15
	FGGC,BAKORI	36	0
	FSTC,DAYI	0	20
KEBBI	FGC,BIRNIN YAURI	0	0
	FGGC,GWANDU	20	5
	FSTC,ZURU	0	0
KOGI	FGC,UGWOLAWO	24	11
	FGGC,KABBA	5	4
	FSTC UGUGU	0	0
KWARA	FGC,ILORIN	48	0
	FGGC,OMU-ARAN	27	6
LAGOS	FGC,IJANIKIN	45	15
	FSTC,YABA	41	21
	KC,LAGOS	60	0
	QC,LAGOS	70	0
NASARAWA	FGC,KEFFI	36	0
	FGGC,KEANA	0	0
	FSTC,DOMA	10	26
NIGER STATE	FGA,SULEJA	28	9
	FGC,MINNA	46	6
	FGC,NEW BUSSA	27	0
	FGGC,BIDA	33	0
	FSTC SHIRORO	0	0
OGUN	FGC,ODOGBOLU	53	0
	FGGC,SAGAMU	42	0
	FSTC IJEBU MUSHIN	0	0
ONDO	FGC,IDOANI	38	10
	FGGC,AKURE	46	0
	FSTC,IKARE AKOKO	29	0
OSUN	FGC,IKIRUN	21	6
	FGGC,IPETUMODU	39	1
	FSTC,ILESA	30	2
OYO	FGC,OGBOMOSHO	54	14
	FGGC,OYO	17	54
	FSTC,IGANGAN	16	0
PLATEAU	FGC,JOS	40	14
	FGGC,LANGTANG	30	24
RIVERS	FGC,PORT HARCOURT	58	0
	FGGC,ABULOMA	38	10
	FSTC,AHOADA	4	0
SOKOTO	FGC,SOKOTO	44	0
	FGGC,TAMBUWAL	48	0
	FSC,SOKOTO	26	0
TARABA	FGC,WUKARI	0	0
	FGGC,JALINGO	26	0
	FSTC,JALINGO	15	7
YOBE	FGC,BUNI YADI	22	8
	FGGC,POTISKUM	28	0
ZAMFARA	FGC,ANKA	17	25
	FGGC,GUSAU	39	6
Total		3013	751

Table 15: Number and Condition of Toilets in Students' Hostel, Classroom and Staff Room by State, School and Gender:

State	School Name	TOILET IN THE HOSTEL				TOILET IN THE CLASSROOM				TEACHERS'S TOILET			
		GOOD		BAD		GOOD		BAD		GOOD		BAD	
		M	F	M	F	M	F	M	F	M	F	M	F
ABIA	FGC,OHAFIA	16	20	20	20	6	6	6	6	2	2	1	1
	FGGC,UMUAHIA	0	0	0	0	0	0	0	0	0	0	0	0
	FSTC,OHANSO	30	16	0	0	0	0	0	0	3	3	0	0
ADAMAWA	FGC,GANYE	4	4	12	13	4	4	0	0	10	3	0	0
	FGGC,YOLA	0	5	0	2	0	58	0	5	0	0	4	4
	FSTC,MICHIKA	8	8	0	0	0	0	0	0	6	2	0	0
AKWA IBOM	FGC,IKOT EKPENE	6	6	0	0	5	5	0	0	5	3	0	0
	FGGC,IKOT OBIO ITONG	0	141	0	0	0	16	0	2	15	14	4	6
	FSTC,UYO	0	72	0	8	0	4	0	3	2	4	0	0
ANAMBRA	FGC,NISE	20	7	0	0	8	4	0	0	5	4	0	0
	FGGC,NKWELLE EZUNAKA	0	148	0	0	0	28	0	30	2	2	1	1
	FSTC,AWKA	0	0	0	0	0	0	0	0	0	0	0	0
BAUCHI	FGC,AZARE	10	6	15	10	10	10	15	15	2	1	2	2
	FGGC,BAUCHI	0	0	0	0	0	42	0	0	6	8	0	0
BAYELSA	FGC,ODI	28	12	12	6	11	11	0	0	4	4	0	0
	FGGC,IMIRINGI	0	0	0	0	0	0	0	0	0	0	0	0
	FSTC,TUNGBO	20	22	4	2	8	8	0	0	4	2	0	0
BENUE	FGGC,GBOKO	0	35	0	0	0	4	0	0	1	1	1	1
	FSTC,OTUKPO	1	1	4	5	2	1	4	4	1	1	1	1
	FGC,OTOB	0	0	0	0	0	0	0	0	0	0	0	0
	FGC,VANDEIKYA	0	0	0	0	0	0	0	0	0	0	0	0
BORNO	FGC,MAIDUGURI	32	17	6	2	24	24	0	0	2	2	0	0
	FGGC,MONGUNO	0	72	0	0	0	48	0	0	0	9	0	0
	FSTC,LASSA	1	1	3	3	16	0	16	0	17	1	0	0
CROSS RIVER	FGC,IKOM	42	36	0	0	16	24	0	0	0	0	0	0
	FGGC,CALABAR	0	72	0	0	0	18	0	18	1	1	1	1
	FSC,OGOJA	8	4	34	20	0	0	11	7	2	2	6	4
DELTA	FGC,WARRI	0	0	0	0	0	0	0	0	0	0	0	0
	FGGC,IBUSA	0	13	0	2	0	4	0	0	3	3	0	0
EBONYI	FGC,OKPOSI	4	4	0	0	0	0	7	7	5	5	0	0
	FGGC,EZZAMGBO	0	10	0	8	2	5	1	3	1	1	2	1
	FSTC,AMUZU	0	0	0	0	0	0	0	0	0	0	0	0
EDO	FGC,IBILLO	0	0	0	0	0	0	0	0	0	0	0	0
	FGGC,BENIN	0	0	0	0	0	0	0	0	0	0	0	0
	FSTC,UROMI	0	0	0	0	0	0	0	0	0	0	0	0
EKITI	FGC,IKOLE EKITI	12	10	18	12	0	0	2	2	1	1	1	1
	FSTC,USI-EKITI	27	26	0	1	6	6	0	0	9	9	0	0
	FSTC,USI-EKITI	0	0	0	0	0	0	0	0	0	0	0	0
ENUGU	FGC,ENUGU	5	2	15	14	2	4	5	4	2	3	2	2
	FGGC,LEJJA	0	47	0	0	0	10	0	0	21	40	0	2
FCT	FGBC,GARKI	34	0	12	0	14	0	0	0	23	0	0	0
	FGGC,ABAJI	0	66	0	6	0	16	0	6	3	5	0	0
	FGC,RUBOCHI	0	0	0	0	0	0	0	0	0	0	0	0
	FGC,KWALI	0	0	0	0	0	0	0	0	0	0	0	0
	FGGC,BWARI	0	0	0	0	0	0	0	0	0	0	0	0
	FSTC,OROZO	0	0	0	0	0	0	0	0	0	0	0	0
GOMBE	FGC,BILLIRI	30	22	6	0	9	9	0	0	2	1	0	1
	FGGC,BAJOGA	0	0	0	70	0	0	0	9	0	0	1	1
IMO	FGC,OKIGWE	48	48	0	0	4	4	0	0	2	2	0	0
	FGGC,OWERRI	0	0	0	0	0	0	0	0	0	0	0	0
	FSTC,UMUAKA	0	0	0	0	0	0	0	0	0	0	0	0

JIGAWA	FGC,KIYAWA	5	5	5	3	5	5	8	2	4	0	4	4
	FGGC,KAZAURE	0	0	0	0	0	0	0	0	0	0	0	0
	FSTC,HADEJIA	12	6	12	6	12	12	8	8	6	6	0	0
KADUNA	FGC,KADUNA	0	0	0	0	0	0	0	0	0	0	0	0
	FGGC,ZARIA	0	82	0	0	0	24	0	0	2	2	2	2
	FSTC,KAFANCHAN	24	10	0	0	15	15	4	4	4	4	2	0
KANO	FGC,KANO	0	0	0	0	0	0	0	0	0	0	0	0
	FGGC,MINJIBIR	0	0	0	0	0	0	0	0	0	0	0	0
	FSTC,GANDUJE	0	0	0	0	0	0	0	0	0	0	0	0
KATSINA	FGC,DAURA	4	4	6	2	0	1	0	0	0	0	0	0
	FGGC,BAKORI	0	50	0	20	0	4	0	20	1	1	4	4
	FSTC,DAYI	22	4	33	8	0	0	6	6	0	0	0	0
KEBBI	FGC,BIRNIN YAURI	44	19	16	2	0	0	1	1	1	0	0	0
	FGGC,GWANDU	0	20	0	28	0	10	0	0	4	4	2	0
	FSTC,ZURU	0	0	0	0	0	0	0	0	0	0	0	0
KOGI	FGC,UGWOLAWO	24	13	2	8	0	0	5	5	0	0	2	2
	FGGC,KABBA	0	6	0	0	0	4	0	4	2	2	0	0
	FSTC UGUGU	0	0	0	0	0	0	0	0	0	0	0	0
KWARA	FGC,I Lorin	70	35	20	15	24	24	11	11	8	4	6	2
	FGGC,OMU-ARAN	0	0	51	39	0	0	8	16	5	6	0	0
LAGOS	FGC,IJANIKIN	0	0	0	0	0	0	0	0	0	0	0	0
	FSTC,YABA	0	0	0	0	0	0	0	0	0	0	0	0
	KC,LAGOS	107	0	0	0	8	0	0	0	2	0	0	0
	QC,LAGOS	0	215	0	0	0	69	0	0	14	44	1	3
NASARAWA	FGC,KEFFI	0	0	0	0	0	0	0	0	0	0	0	0
	FGGC,KEANA	0	0	0	0	0	0	0	0	0	0	0	0
	FSTC,DOMA	0	0	0	0	0	0	0	0	0	0	0	0
NIGER STATE	FGC,MINNA	2	2	8	8	0	0	12	12	2	2	3	3
	FGC,NEW BUSSA	24	20	6	16	8	24	0	0	2	2	2	2
	FGGC,BIDA	0	56	0	16	0	80	0	0	18	8	2	2
	FGA,SULEJA	0	0	0	0	0	0	0	0	0	0	0	0
	FSTC SHIRORO	0	0	0	0	0	0	0	0	0	0	0	0
OGUN	FGGC,SAGAMU	0	133	0	0	0	64	0	18	18	24	10	10
	FGC,ODOGBOLU	0	0	0	0	0	0	0	0	0	0	0	0
	FSTC IJEBU MUSHIN	0	0	0	0	0	0	0	0	0	0	0	0
ONDO	FGC,IDOANI	0	0	0	0	0	0	0	0	0	0	0	0
	FGGC,AKURE	0	0	0	0	0	0	0	0	0	0	0	0
	FSTC,IKARE AKOKO	0	0	0	0	0	0	0	0	0	0	0	0
OSUN	FGGC,IPETUMODU	0	60	0	0	0	42	0	0	10	12	0	0
	FGC,IKIRUN	0	0	0	0	0	0	0	0	0	0	0	0
	FSTC,Ilesa	0	0	0	0	0	0	0	0	0	0	0	0
OYO	FGC,OGBOMOSHO	13	8	0	25	25	0	0	5	5	0	0	0
	FGGC,OYO	0	64	0	90	0	17	0	54	0	12	0	12
	FSTC,IGANGAN	0	0	0	0	0	0	0	0	0	0	0	0
PLATEAU	FGC,JOS	21	13	17	16	9	10	7	6	5	7	7	6
	FGGC,LANGTANG	0	64	0	20	0	36	0	24	6	3	10	14
RIVERS	FGC,PORT HARCOURT	29	19	2	16	29	25	14	11	31	31	0	0
	FSTC,AHOADA	20	7	0	0	0	0	0	0	0	0	1	1
	FGGC,ABULOMA	0	0	0	0	0	0	0	0	0	0	0	0
SOKOTO	FGC,SOKOTO	32	32	5	5	12	12	2	2	8	8	2	2
	FGGC,TAMBUWAL	0	80	0	0	0	40	0	0	7	5	0	0
	FSC,SOKOTO	0	0	0	0	0	0	0	0	0	0	0	0
TARABA	FGC,WUKARI	0	0	0	0	0	0	0	0	0	0	0	0
	FGGC,JALINGO	0	30	0	0	0	10	0	0	6	6	0	0

	FSTC,JALINGO	22	10	0	0	0	0	0	0	2	1	0	0
YOBE	FGC,BUNI YADI	24	12	12	12	6	4	6	4	0	0	4	4
	FGGC,POTISKUM	0	14	0	0	0	3	0	0	1	1	0	0
ZAMFARA	FGC,ANKA	0	0	0	0	0	0	0	0	0	0	0	0
	FGGC,GUSAU	0	24	0	24	0	4	0	96	7	10	0	0

Table 16: Number and Condition of Other Facilities by State and School

State	School Name	COMPUTER		LABORATORY		HOSTEL		LIBRARY		STAFFROOM		STORE		WORKSHOP	
		Good	Bad	Good	Bad	Good	Bad	Good	Bad	Good	Bad	Good	Bad	Good	Bad
ABIA	FGC,OHAFAIA	75	44	0	4	0	13	1	0	0	2	0	4	0	2
	FGGC,UMUAHIA	60	40	6	2	7	2	1	0	2	0	1	0	0	0
	FSTC,OHANSO	57	73	0	6	6	1	1	0	1	0	1	0	4	1
ADAMAWA	FGC,GANYE	30	12	6	0	2	2	1	0	2	0	4	0	1	0
	FGGC,YOLA	73	57	4	2	5	2	0	1	3	0	2	2	2	4
	FSTC,MICHIKA	0	0	4	0	3	0	0	0	1	0	1	0	4	0
AKWA IBOM	FGC,IKOT EKPENE	46	5	5	1	12	0	2	0	3	0	2	0	2	0
	FGGC,IKOT OBIO ITONG	10	47	5	0	6	0	1	0	3	0	2	0	1	4
	FSTC,UYO	141	21	0	4	3	5	1	0	0	1	1	1	3	5
ANAMBRA	FGC,NISE	4	0	6	0	9	0	1	0	1	0	1	0	1	0
	FGGC,NKWELLE EZUNAKA	60	20	6	0	9	0	1	0	2	0	1	0	0	1
	FSTC,AWKA	0	0	0	0	0	0	0	0	0	0	0	0	0	0
BAUCHI	FGC,AZARE	173	0	10	3	12	0	0	1	0	2	3	0	0	2
	FGGC,BAUCHI	35	15	11	0	7	0	7	0	2	0	3	0	0	0
BAYELSA	FGC,ODI	4	50	1	5	4	2	0	0	1	0	2	0	0	0
	FGGC,IMIRINGI	0	0	0	0	0	0	0	0	0	0	0	0	0	0
	FSTC,TUNGBO	70	40	2	3	3	0	1	0	0	0	2	2	4	0
BENUE	FGC,OTOB I	13	35	7	0	6	4	1	0	2	0	0	1	0	0
	FGC,VANDEIKYA	50	51	0	0	0	0	0	0	0	0	0	0	0	0
	FGGC,GBOKO	41	67	4	0	7	0	1	0	1	0	1	0	2	0
	FSTC,OTUKPO	38	60	1	3	0	9	1	1	0	0	1	1	2	5
BORNO	FGC,MAIDUGURI	112	48	6	1	11	1	2	0	0	0	3	0	3	1
	FGGC,MONGUNO	0	0	3	0	3	0	1	0	1	0	1	0	0	1
	FSTC,LASSA	52	50	3	1	2	6	1	1	0	1	1	0	2	3
CROSS RIVER	FGC,IKOM	45	0	4	3	8	6	1	0	0	0	0	0	1	0
	FGGC,CALABAR	81	56	5	8	7	0	2	0	1	0	1	0	0	1
	FSC,OGOJA	68	32	8	4	4	7	1	1	0	2	0	2	0	1
DELTA	FGC,WARRI	0	0	0	0	0	0	0	0	0	0	0	0	0	0
	FGGC,IBUSA	10	40	11	3	6	2	1	1	1	0	0	2	1	1
EBONYI	FGC,OKPOSI	0	45	0	4	11	0	0	1	0	1	0	1	0	3
	FGGC,EZZAMGBO	40	50	4	1	3	2	0	1	1	0	0	1	0	0
	FSTC,AMUZU	0	0	0	0	0	0	0	0	0	0	0	0	0	0
EDO	FGC,IBILLO	0	0	0	0	0	0	0	0	0	0	0	0	0	0
	FGGC,BENIN	10	15	5	1	8	0	1	1	3	0	1	1	0	0
	FSTC,UROMI	57	13	4	0	2	10	1	0	0	1	0	1	5	2
EKITI	FGC,IKOLE EKITI	109	0	3	1	3	9	1	0	2	0	1	0	0	0
	FGGC,EFON ALAAYE	0	0	0	0	0	0	0	0	0	0	0	0	0	0
	FSTC,USI-EKITI	50	20	3	0	8	0	0	1	3	0	1	0	4	0
ENUGU	FGC,ENUGU	15	25	7	4	10	6	0	1	1	0	1	1	1	1
	FGGC,LEJJA	48	10	5	1	2	3	1	0	0	0	1	0	0	0
FCT	FGBC,GARKI	60	36	11	0	7	0	1	1	3	0	2	0	0	0
	FGC,KWALI	90	50	9	0	24	0	1	1	3	0	2	0	4	0
	FGC,RUBOCHI	2	40	6	0	6	1	1	0	1	0	1	0	0	0
	FGGC,ABAJI	19	26	13	0	6	0	1	0	1	1	1	0	0	0
	FGGC,BWARI	68	23	9	2	12	0	2	0	0	1	0	1	1	0
	FSTC,OROZO	65	13	4	0	6	2	1	0	6	4	2	0	6	4
GOMBE	FGC,BILLIRI	68	96	3	0	4	2	1	0	1	0	1	0	1	0
	FGGC,BAJOGA	50	20	7	0	1	2	1	1	1	0	1	1	0	1
IMO	FGC,OKIGWE	0	0	8	0	14	0	1	0	2	0	1	0	1	0
	FGGC,OWERRI	60	19	1	4	5	9	0	1	1	2	0	1	0	0
	FSTC,UMUAKA	0	0	0	0	0	0	0	0	0	0	0	0	0	0
JIGAWA	FGC,KIYAWA	35	28	5	1	17	8	1	1	1	1	0	1	0	2
	FGGC,KAZAURE	61	50	10	2	8	0	2	0	1	0	2	0	2	0
	FSTC,HADEJIA	0	0	1	3	3	3	0	1	1	0	0	0	4	0

KADUNA	FGC,KADUNA	30	54	22	0	10	24	0	2	12	3	1	1	1	0
	FGGC,ZARIA	89	36	5	4	4	2	1	1	0	0	0	0	0	0
	FSTC,KAFANCHAN	49	4	1	3	8	0	0	1	2	0	0	1	5	2
KANO	FGC,KANO	65	5	6	0	5	2	2	1	16	0	2	0	3	0
	FGGC,MINJIBIR	33	10	6	3	19	5	1	1	0	1	1	0	0	1
	FSTC,GANDUJE	0	0	0	0	1	0	0	0	0	0	0	0	4	0
KATSINA	FGC,DAURA	20	80	4	1	6	2	1	1	0	1	0	0	1	2
	FGGC,BAKORI	50	40	4	0	7	0	2	0	1	1	2	0	0	1
	FSTC,DAYI	23	27	2	0	11	1	0	1	0	1	0	1	3	0
KEBBI	FGC,BIRNIN YAURI	23	27	7	3	10	0	0	1	0	1	0	1	0	0
	FGGC,GWANDU	54	36	5	0	3	3	0	1	2	0	2	0	0	0
	FSTC,ZURU	0	0	0	0	0	0	0	0	0	0	0	0	0	0
KOGI	FGC,UGWOLAWO	30	18	5	1	10	1	1	1	1	0	1	1	2	0
	FGGC,KABBA	30	15	0	0	3	3	0	0	0	0	0	0	0	0
	FSTC UGUGU	0	0	0	0	0	0	0	0	0	0	0	0	0	0
KWARA	FGC,I LORIN	75	12	11	0	14	2	1	0	15	0	1	0	1	0
	FGGC,OMU-ARAN	32	44	10	6	6	0	1	0	3	3	2	0	1	0
LAGOS	FGC,IJANIKIN	3	31	8	4	11	2	1	1	1	0	0	0	0	0
	FSTC,YABA	2	59	1	12	5	6	1	3	2	10	2	3	3	16
	KC,LAGOS	135	60	7	0	7	0	2	0	2	0	2	0	2	0
	QC,LAGOS	38	85	14	0	8	0	1	0	35	4	1	0	1	0
NASARAWA	FGC,KEFFI	171	0	4	0	10	0	1	0	2	0	1	0	0	0
	FGGC,KEANA	0	0	0	0	0	0	0	0	0	0	0	0	0	0
	FSTC,DOMA	10	12	3	1	4	3	1	0	0	2	0	1	2	3
NIGER STATE	FGA,SULEJA	131	26	5	4	5	3	0	1	1	0	1	0	1	1
	FGC,MINNA	48	100	4	0	4	6	1	0	2	0	1	1	2	5
	FGC,NEW BUSSA	35	10	4	4	4	3	1	0	1	0	1	0	2	0
	FGGC,BIDA	100	20	5	1	7	2	1	0	1	0	0	1	2	0
OGUN	FSTC SHIRORO	0	0	0	0	0	0	0	0	0	0	0	0	0	0
	FGC,ODOGBOLU	72	110	6	1	10	1	3	0	1	0	1	0	2	0
	FGGC,SAGAMU	20	0	5	0	14	0	1	0	1	0	1	0	6	0
ONDO	FSTC IJEBU MUSHIN	0	0	0	0	0	0	0	0	0	0	0	0	0	0
	FGC,IDOANI	57	32	2	32	2	3	0	1	1	5	0	2	1	4
	FGGC,AKURE	103	31	10	0	9	0	0	0	0	1	1	0	6	4
OSUN	FSTC,IKARE AKOKO	30	50	3	3	6	1	0	1	0	1	0	0	0	1
	FGC,IKIRUN	50	30	3	0	5	0	2	0	2	0	1	0	0	0
	FGGC,IPETUMODU	1	0	4	0	5	0	1	0	6	0	1	0	1	0
OYO	FSTC,ILESA	35	15	3	0	10	2	1	0	1	0	1	0	8	2
	FGC,OGBOMOSHO	33	6	6	1	16	0	1	0	3	0	1	0	8	0
	FGGC,OYO	1	2	5	0	4	6	1	0	1	3	1	0	4	0
PLATEAU	FSTC,IGANGAN	20	20	0	3	1	0	0	0	0	0	2	0	0	0
	FGC,JOS	25	23	1	1	72	0	0	1	8	3	1	3	2	2
	FGGC,LANGTANG	1	3	6	4	5	9	1	2	0	5	1	0	0	2
RIVERS	FGC,PORT HARCOURT	15	63	12	0	4	0	2	0	0	0	0	1	1	2
	FGGC,ABULOMA	76	18	5	0	9	1	1	0	1	0	2	0	1	0
	FSTC,AHOADA	60	0	0	3	10	0	1	0	1	0	1	0	0	4
SOKOTO	FGC,SOKOTO	35	20	15	1	8	0	1	1	9	2	1	1	1	2
	FGGC,TAMBUWAL	95	26	6	0	4	0	1	0	1	0	1	0	1	0
	FSC,SOKOTO	32	0	5	1	4	4	2	0	1	0	1	0	0	1
TARABA	FGC,WUKARI	0	0	0	0	0	0	0	0	0	0	0	0	0	0
	FGGC,JALINGO	50	0	6	0	6	0	2	0	1	0	1	0	1	0
	FSTC,JALINGO	39	28	3	0	6	0	1	0	2	0	1	0	5	0
YOBE	FGC,BUNI YADI	44	4	4	1	6	4	1	0	0	1	0	1	0	1
	FGGC,POTISKUM	40	10	4	0	7	0	2	0	1	0	1	0	1	0
ZAMFARA	FGC,ANKA	40	35	5	1	4	4	1	0	0	0	3	0	1	0
	FGGC,GUSAU	101	25	1	5	4	3	1	0	1	0	1	0	0	0
Total		4606	2804	499	181	715	227	94	39	200	67	98	43	148	101

5.0 KEY INDICATORS

5.1 Table 17 presents the following key indicators:

Table 17: Federal Unity Colleges Key indicators:

STATES	NAME OF SCHOOL	STUDENT CLASSROOM RATIO	STUDENT TEACHER RATIO	STUDENT QUALIFIED TEACHERS RATIO
ABIA	FGC, OHAFIA	36	48	57
	FGGC UMUAHIA	44	28	35
	FSTC, OHANSO	44	22	27
ADAMAWA	FGC, GANYE	53	24	29
	FSTC MICHIKA		9	16
	FGGC, YOLA	22	15	20
AKWA IBOM	FSTC,UYO	42	12	14
	FGC IKOT EKPENE	47	21	36
	FGGC IKOT OBIO ITONG	49	26	29
ANAMBRA	FSTC, AWKA		22	38
	FGGC, ONITSHA	45	40	77
	FGC, NISE,	39	27	36
BAUCHI	FGC,AZARE	32	15	17
	FGGC, BAUCHI	17		
BAYELSA	FGGC, IMIRINGI		5	7
	FGCE, ODI	46	28	34
	FSTC TUNGBO	31	13	21
BENUE	FGC, VANDEIKYA	74	64	77
	FSTC, OTUKPO,	41	18	34
	FGC OTOBI	47	22	25
	FGGC GBOKO	38	20	26
BORNO	FGC, MAIDUGURI	57	15	22
	FGGC MONGUNO	22	41	261
	FSTC LASSA	16	15	24
CROSS RIVER	FGGC, CALABAR	54	14	23
	FGC, IKOM.	77	35	46
	FSC, OGOJA	44	27	37
DELTA	FGC WARRI		11	21
	FGGC, IBUSA,	37	3	4
EBONYI	FSTC AMUZU	3		
	FGC, OKPOSI	44	33	47
	FGGC, EZZAMGBO	37	23	32
EDO	FGC, IBILLO		17	22
	FSTC, UROMI	32	22	49
	FGGC BENIN	39	18	19
EKITI	FGC IKOLE EKITI	37	16	22
	FSTC,USI-EKITI	40		
	FGGC EFON ALAAYE,		15	17
ENUGU	FGGC, LEJJA	53	32	51
	FGC ENUGU	0	0	0
FCT	FGGC, ABAJI	41	14	18
	FSTC OROZO	47		
	FGGC BWARI	35	11	14
	FGC KWALI	66	21	25
	FGC RUBOCHI	54	35	61
	FGBC, GARKI	49	8	9
GOMBE	FGC, BILLIRI.	53	21	28
	FGGC,BAJOGA	7	3	4
IMO	FGC, OKIGWE	45	37	67
	FSTC,UMUAKA			
	FGGC, OWERRI	43	28	40

JIGAWA	FGGC KAZAURE	25	12	18
	FSTC,HADEJIA	0	0	
	FGC KIYAWA	80	41	60
KADUNA	FGGC ZARIA	35	19	27
	FSTC, KAFANCHAN	54	12	19
	FGC KADUNA	36	21	34
KANO	FSTC GANDUJE,	0	0	
	FGGC MINJIBIR	31	9	13
	FGC, KANO	40	13	17
KATSINA	FGGC,BAKORI	70	40	47
	FSTC DAYI	32	18	26
	FGC, DAURA	50	26	39
KEBBI	FGGC,GWANDU	58		
	FGC, BIRNIN YAURI			
	FSTC ZURU		16	19
KOGI	FGGC KABBA	156	20	23
	FGC,UGWOLAWO	45		
	FSTC UGUGU			
KWARA	FGC, ILORIN	37	7	9
	FGGC OMU-ARAN	33	13	24
LAGOS	FGC IJANIKIN	52	19	22
	KING'S COLLEGE LAGOS	52	34	41
	FSTC YABA	98	6	9
	QUEEN'S COLLEGE, LAGOS	49	23	26
NASARAWA	FGC KEFFI	47	8	18
	FSTC DOMA	25	15	21
	FGGC KEANA		12	16
NIGER	FGC MINNA	40	16	21
	FGC,NEW BUSSA	16	12	15
	FGGC,BIDA	27	20	25
	FSTC KUTA SHIRORO			
	FGA SULEJA,	44	10	13
OGUN	FGC, ODOGBOLU	44	32	43
	FSTC IJEBUN MUSIN			
	FGGC,SAGAMU	53	22	27
ONDO	FGC, IDOANI	30	22	30
	FGGC, AKURE	41	10	14
	FSTC IKARE AKOKO	82	28	31
OSUN	FGGC, IPETUMODU.	48	24	27
	FSTC, ILESA	42	9	11
	FGC IKIRUN	73	18	23
OYO	FGC,OGBOMOSO	25		
	FSTC IGANGAN,	0	0	0
	FGGC, OYO	25	12	13
PLATEAU	FGGC, LANGTANG	22	10	13
	FGC, JOS	39	14	20
RIVERS	FSTC, AHOADA	323	24	32
	FGGC ABULOMA	42	38	51
	FGC, PORT HARCOURT	38	14	20
SOKOTO	FGC, SOKOTO	42	22	31
	FGGC TAMBUIWAL,	33	321	321
	FSC SOKOTO	35	17	23
TARABA	FSTC, JALINGO	30	4	5
	FGGC, JALINGO	26	17	21
	FGC, WUKARI			
YOBE	FGGC POTISKUM	50	24	26
	FGC BUNI YADI	15	15	25
ZAMFARA	FGC ANKA	44	21	27
	FGGC GUSAU	11	11	15
Total		44	17	23